


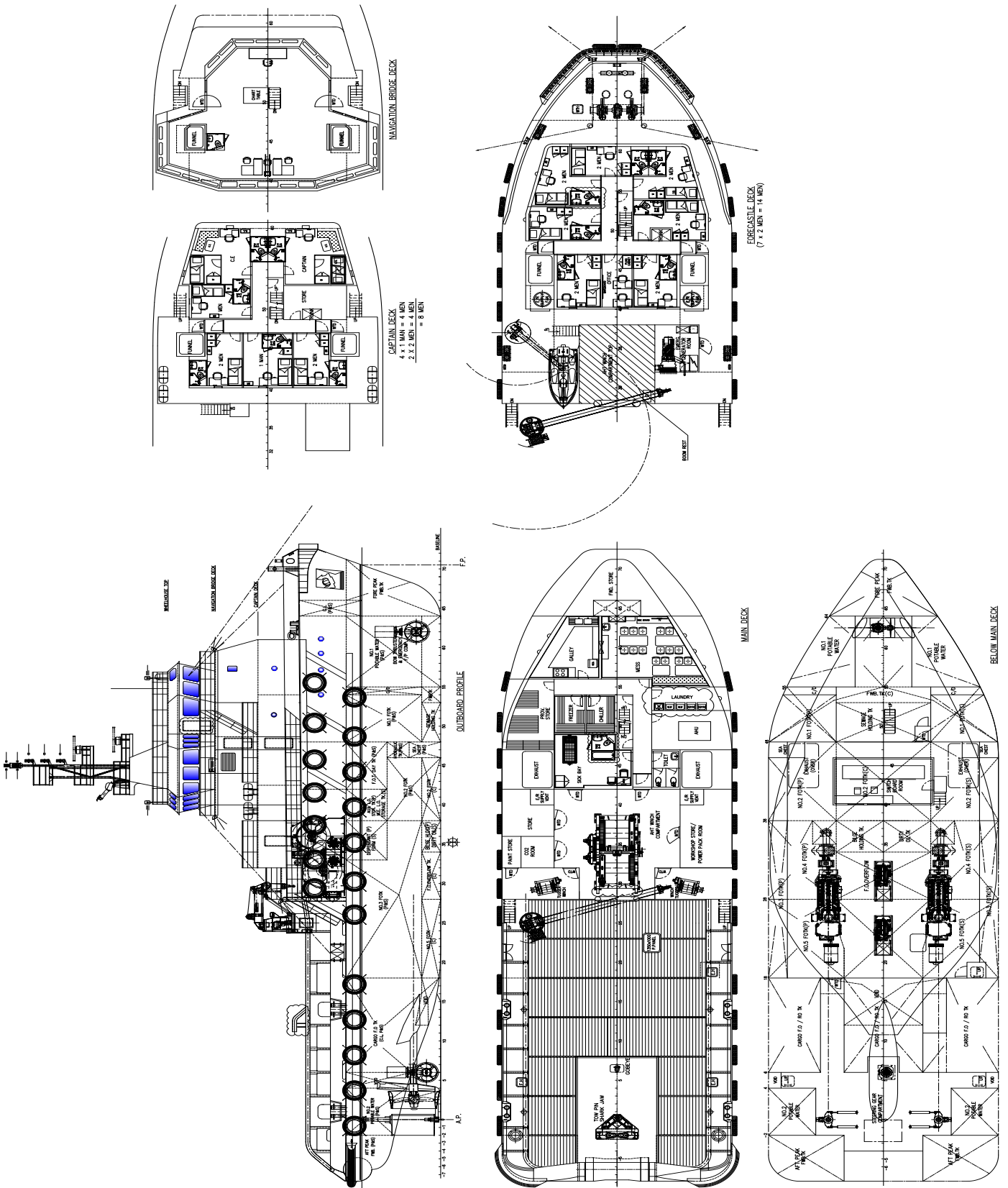


The robust, efficient and flexible design of the EuroTug makes it one of the best vessels for anchor handling, dredging support and long distance towages. The EuroTug can be adapted to perfectly fit any project within a short time.

GENERAL	
IMO NR.	9751690
CALL SIGN	ZDSY4
HOME PORT	Gibraltar
CLASSIFICATION	Bureau Veritas  HULL <ul style="list-style-type: none"> • MACH, Anchor Handling Tug Fire-Fighting, Unrestricted Navigation

Neptun Commander | DPI

DIMENSIONS		MACHINERY / PERFORMANCES	
LENGTH O.A.	48,20 meters	BOLLARD PULL	c.a. 65 ton
BEAM/WIDTH	14,60 meters	MAX. SPEED	11 knots
DEPTH AT SIDE	6,00 meters	MAIN ENGINES	2x Caterpillar 3516C
DRAFT MIN/MAX	5,00 meters	TOTAL OUTPUT	3840 kW = 5148 BHP
AIR DRAFT	24,14 meters	PROPULSION	Twin CPP in nozzles
GROSS TONNAGE	1243 ton	BOW THRUSTER	CPP Type Berg; BTT 213 electric motor 560 kW
NET TONNAGE	334 ton	STERN THRUSTER	CPP type.Berg; BTT III 6t thrust
DECK CARGO CAP.	150 ton	GENERATORSET	2x Caterpillar C18 1x Caterpillar C4.4
CLEAR DECK AREA	200 m ²	GENERATOR POWER	2x 350 kW + 1x 82 kW
CARGO DECK LOAD	5 tons per m ²	HYDRAULIC POWERPACK	ME HPU-090426 / 2x 30 kW
TANK CAPACITIES / TRANSFER		DECK LAY-OUT	
FUEL OIL	735 m ³	WINCH	ME Double Drum Waterfall
FRESH WATER	273 m ³	ANCHOR HANDLING	Pull Force 150T, Holding F. 200T
FRESH WATER GENERATOR	6,m ³ / day	TOWING DRUM	Pull Force 150T, Holding F. 100T
TRANSFER OF FUEL OIL	50 m ³ / hr	TOW WIRES	1.000 meters
TRANSFER OF FRESH WATER	20 m ³ / hr	TOW WIRES DIAMETER	56 millimeters
ACCOMMODATION		TUGGERWINCH	10 tons
FACILITIES	Cabins berths airconditioned & heating max 22 persons	TOWING PINS	SWL 200 ton
		MAIN MARINE DECK CRANE	Hydraulic telescope crane,Jebsen & Jessen offshore equipment
		MAXIMUM LIFT CAPACITY	5 ton@13m
		POSITION REF.SYSTEM	
		Kongsberg DPI	



Neptun Commander | DPI

For more information, please contact us on:
 T +31 (0)184 621 423 E info@neptunmarine.com W www.neptunmarine.com
 Version: V.02

