




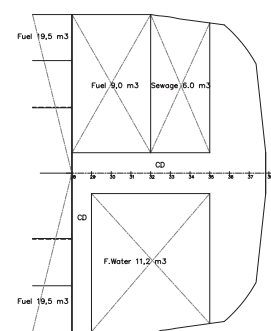
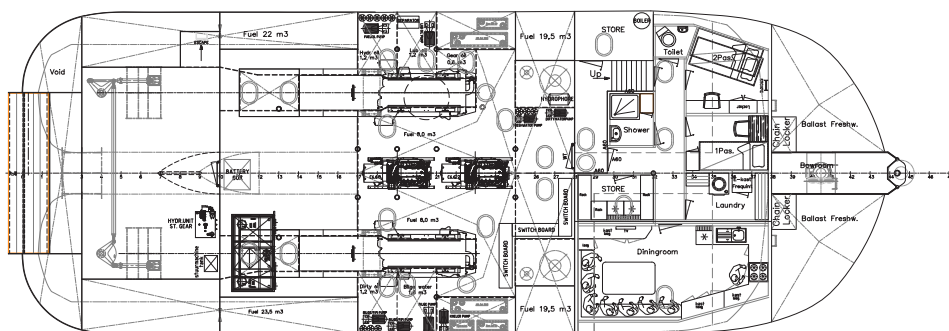
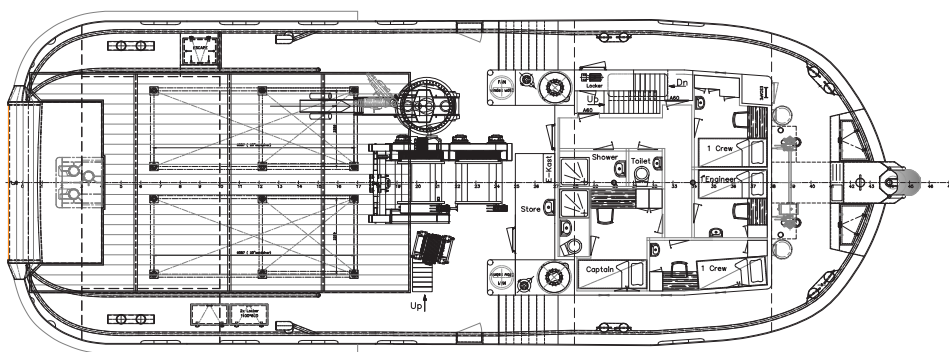
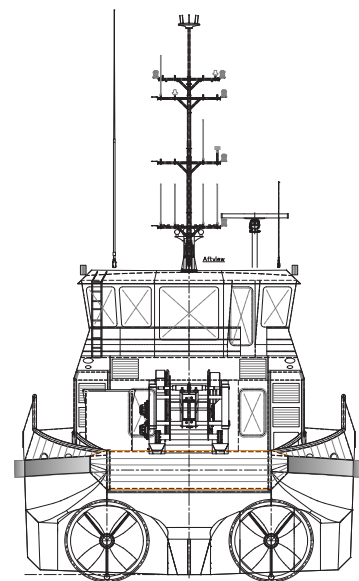
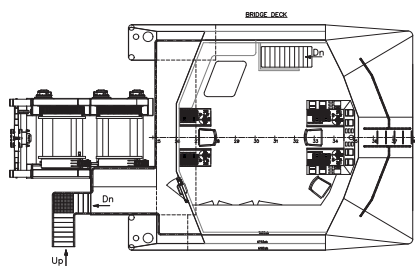
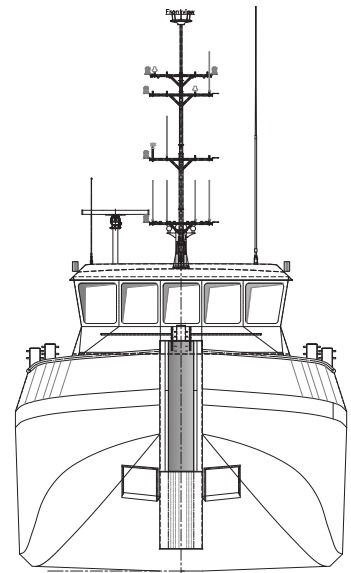
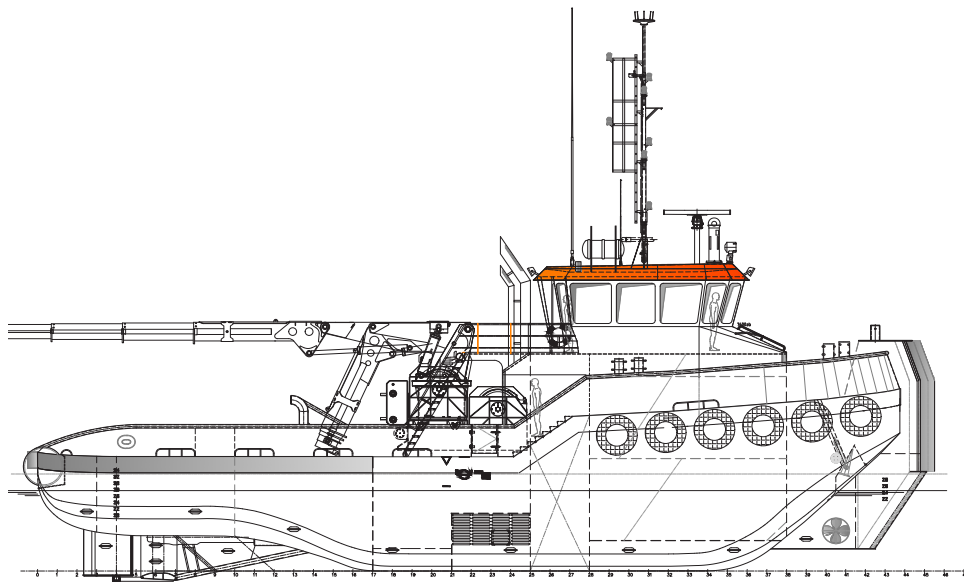
The robust, efficient and flexible design of the AH Tug makes it one of the best vessels for anchor handling, dredging support and long distance towages. The AH Tug can be adapted to perfectly fit any project within a short time.

EuroTug 2710 | Neptun Fury

GENERAL	
YEAR OF BUILD	2014
HOME PORT	Aalst
FLAG	Dutch
CLASSIFICATION	Bureau Veritas I  HULL <ul style="list-style-type: none"> • MACH • AUT-UMS • ICE CLASS I D Unrestricted Navigation

DIMENSIONS	
LENGTH O.A.	27,53 meter
BREADTH MLD.	10,00 meter
DRAFT MIN	2,68 meter
DRAFT OPERATING	3,00 meter
DRAFT MAX.	3,28 meter
GROSS TONNAGE	253
NET TONNAGE	75
PERFORMANCES	
MAXIMUM SPEED	10 knots
ECONOMIC SPEED	7 knots
BOLLARD PULL	Approx.41,7 ton
PROPULSION	
MAIN ENGINES	2X Caterpillar 3512 C
TOTAL POWER	2X 1194kW at 1600 rpm
PROPELLERS	2x 2ø2200
TANKS	
FUEL OIL	109,5 m ³
HYDR. OIL	1,2 m ³
LUBR. OIL	1,2 m ³
DIRTY OIL	1,2 m ³
FRESH WATER	55 m ³
SEWAGE	6 m ³
BILGE WATER	2 m ³

DECK LAY-OUT	
GENERATOR SETS	2x CAT C9, 2x 250 kVA
BOW THRUSTER	200 kW,electric
FREE DECK SPACE	90 m ³
DECK STRENGTH	6 ton m ³
ANCHOR HANDLING/TOWING WINCH	100 ton,low speed;7mtr./min.High speed 18 mtr./min
AH PULL/HOLD	100/120t
TOW PULL/HOLD	64/125t
AH WIRE CAPACITY	200 m 56 mm
TOW WIRE CAPACITY	700 m 40 mm
TOWING PINS	2x and wire catcher
FUEL OIL TRANSFERPUMP	80 m ³
FRESH WATER TRANSFER	40 m ³
TUGGER WINCH	15 t
DECK CRANE	HEILA HLRM 170-4SL 5,30 t @ 18,00m
HPU	Electric 2 x 75kW
ACCOMMODATION	
PERSONS	7
SINGLE BED	5
DOUBLE BED	1
AIR CONDITIONING	YES



EuroTug 2710 | Neptun Fury

For more information, please contact us on:

T +31 (0)184 621 423 E info@neptunmarine.com W www.neptunmarine.com

Version: V.02

