




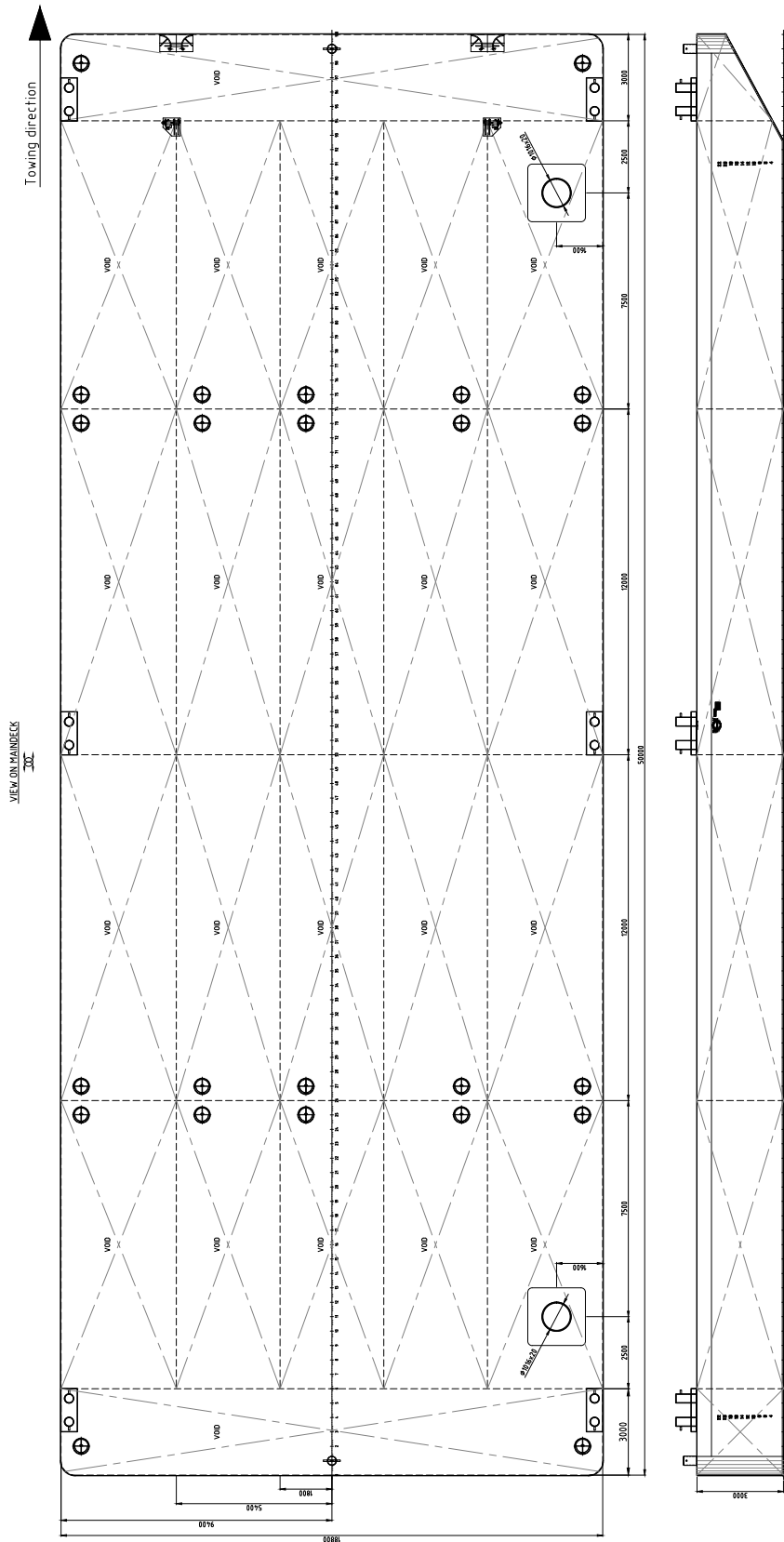
Neptune has got various vessels and pontoons available for sale or charter. To fulfil your operational demands, Neptune offers a wide range of deck equipment, including accommodation units, mooring equipment and cranes.

| GENERAL        |   |
|----------------|---|
| IMO NR.        | N/A   |
| CALL SIGN      | N/A   |
| YEAR BUILT     | 2025  |
| HOME PORT      | Aalst   |
| CLASSIFICATION | Bureau Veritas I  HULL • Pontoon Unregistered Navigation |

## EuroPontoon 5019 | NP 686

| DIMENSIONS             |                       |
|------------------------|-----------------------|
| LENGTH O.A.            | 50,00 meter           |
| BREADTH MLD.           | 18,80 meter           |
| DEPTH AT SIDE          | 3,00 meter            |
| DRAUGHT MAX            | 2,32 meter            |
| DRAUGHT MIN            | 0,63 meter            |
| CAPACITY               |                       |
| GROSS TONNAGE          | 000 ton               |
| NET TONNAGE            | 000 ton               |
| LIGHT SHIPWEIGHT       | 410 ton               |
| CARGO CAPACITY         | 1753 ton              |
| DECK LOAD              | 12 ton/m <sup>2</sup> |
| CONSTRUCTION           |                       |
| DECK PLATE THICKNESS   | 12 mm                 |
| SHEERSTRAKE THICKNESS  | 25 mm                 |
| NUMBER OF COMPARTMENTS | 22 void spaces        |

| STANDARD OUTFITTING       |   |
|---------------------------|---|
| BOLLARDS                  | 6 x double bollards 2 x single bollards   |
| MANHOLES                  | Flush type manholes   |
| TOWING BRACKETS           | 3 x towing brackets SWL 120 T   |
| FAIRLEADS                 | 2 x pieces SWL 120 T  |
| SPUD HOLES                | 2x SB side<br>1x PS side  |
| OPTIONS                   |   |
| TOWING ARRANGEMENT        | Towing bridle with chains and emergency towing arrangement  |
| DECK EQUIPMENT            | Various of all kind and different deck equipment; cranes, winches, power-packs, accommodation units ect |
| SPUD POLES                | Spuds with a diameter of 914 mm   |
| SPUD HANDLING ARRANGEMENT | Spuds leg lifting cylinders, including stand diesel driven hydraulic power unit (HPU)                   |
| RO-RO RAMPS               | Winch operated or hydraulic   |
| LADDERS                   | Boarding ladders  |



# EuroPontoon 5019 | NP 686

For more information, please contact us on:

T +31 (0)184 621 423 E info@neptunemarine.com W www.neptunemarine.com

Version: V.02

