


Neptune has got various vessels and pontoons available for sale or charter. To fulfil your operational demands, Neptune offers a wide range of deck equipment, including accommodation units, mooring equipment and cranes.

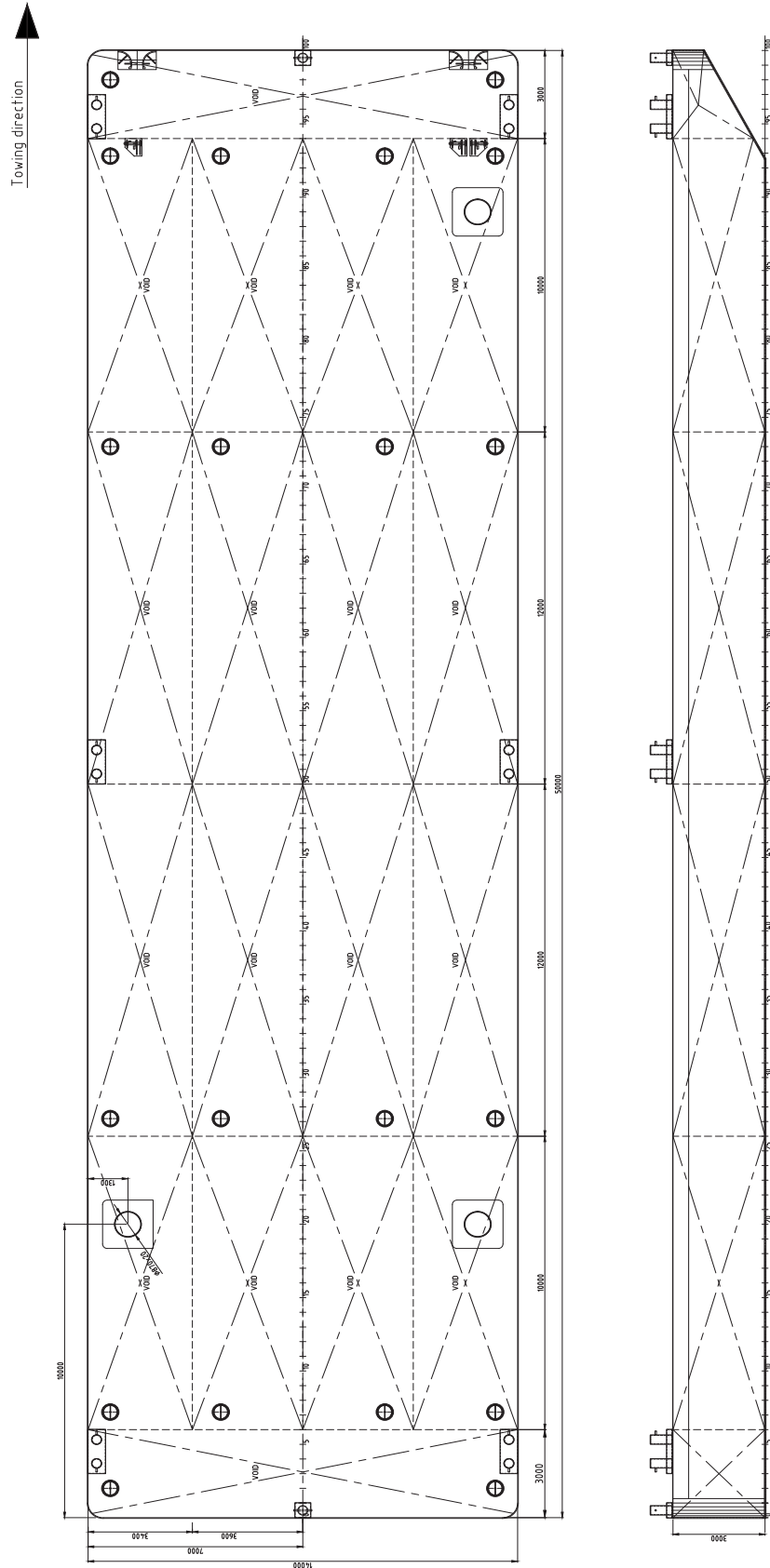


**EuroPontoon 5014 | NP 649**

GENERAL	
IMO NR.	N/A
CALL SIGN	N/A
YEAR BUILT	2024
HOME PORT	Aalst
CLASSIFICATION	Bureau Veritas    HULL Unrestricted Navigation Unmanned Towing

DIMENSIONS		
LENGTH O.A.	50,00	meters
BREADTH MLD.	14,00	meters
DEPTH AT SIDE	3,00	meters
DRAUGHT MAX	2,32	meters
DRAUGHT MIN	0,48	meters
CAPACITY		
GROSS TONNAGE	542	tons
NET TONNAGE	162	tons
LIGHT SHIPWEIGHT	330	tons
CARGO CAPACITY	1277	tons
DECK LOAD	15	tons m <sup>2</sup>
CONSTRUCTION		
DECK PLATE THICKNESS	12	mm
SHEERSTRAKE THICKNESS	25	mm
NUMBER OF COMPARTMENTS	18 void spaces	

STANDARD OUTFITTING	
BOLLARDS	6 x double bollards 2 x single bollards
MANHOLES	Flush type manholes
TOWING BRACKETS	2 x towing brackets SWL 65 ton at the bow
FAIRLEADS	2 x pieces SWL 65 ton
SPUD HOLES	2 x at SB side 1 x at PS side
OPTIONS	
TOWING ARRANGEMENT	Towing bridle with chains and emergency towing arrangement
DECK EQUIPMENT	Various of all kind and different deck equipment; cranes, winches, power-packs, accommodation units ect
SPUD POLES	Spuds with a diameter of 914 mm
SPUD HANDLING ARRANGEMENT	Spuds leg lifting cylinders, including stand diesel driven hydraulic power unit (HPU)
RO-RO RAMPS	Winch operated or hydraulic
LADDERS	Boarding ladders



## EuroPontoon 5014 | NP 649

For more information, please contact us on:

T +31 (0)184 621 423 E [info@neptunemarine.com](mailto:info@neptunemarine.com) W [www.neptunemarine.com](http://www.neptunemarine.com)

Version: V.02

