


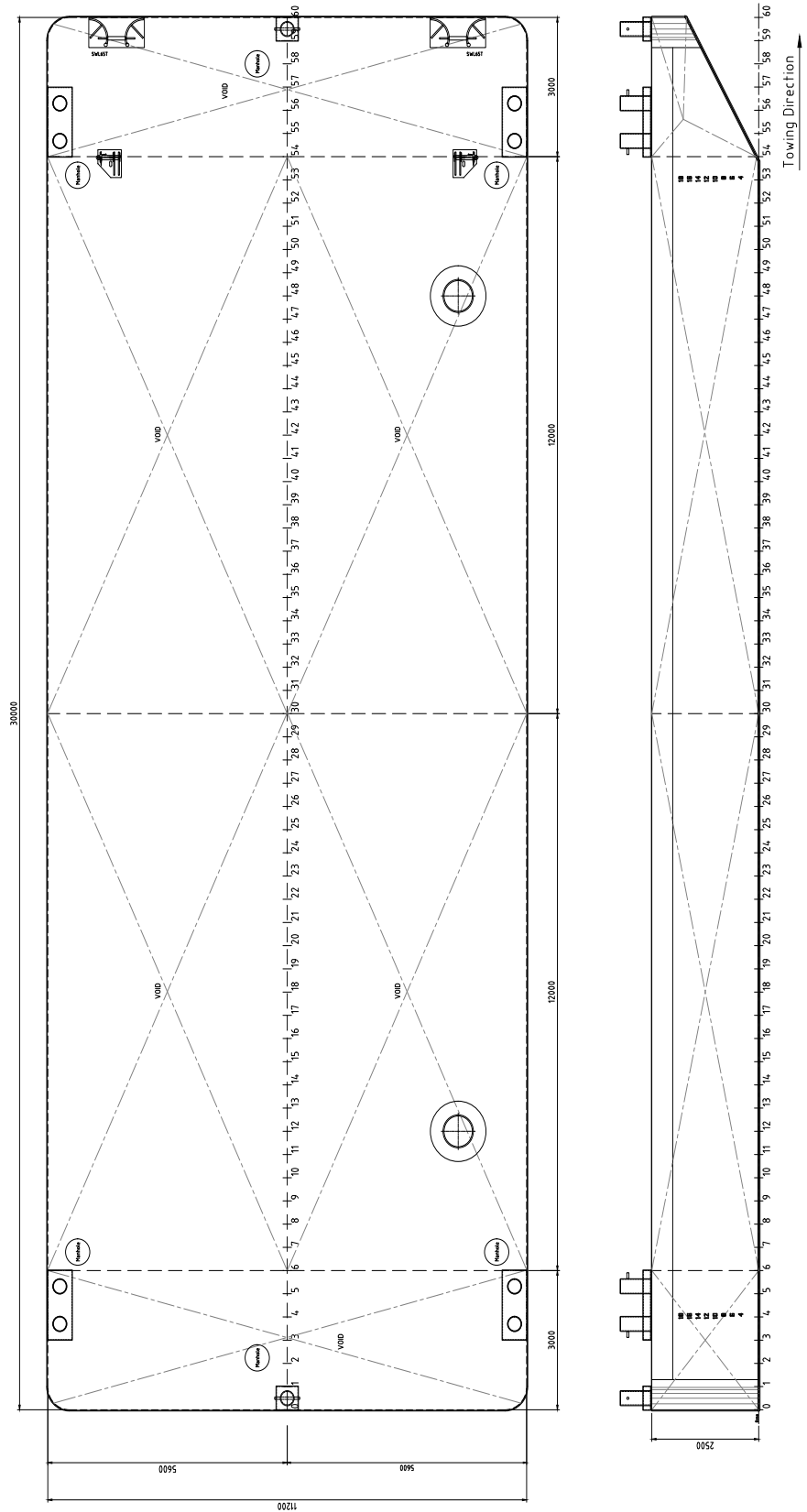
Neptune has got various vessels and pontoons available for sale or charter. To fulfil your operational demands, Neptune offers a wide range of deck equipment, including accommodation units, mooring equipment and cranes.

EuroPontoon 3011 | NP 685

| GENERAL | |
|----------------|---|
| IMO NR. | N/A |
| CALL SIGN | N/A |
| YEAR BUILT | 2022 |
| HOME PORT | Aalst |
| CLASSIFICATION | Bureau Veritas  HULL-pontoon Unrestricted Navigation Unmanned Towing |

| DIMENSIONS | | |
|------------------------|---------------|--------------------|
| LENGTH O.A. | 30,00 | meter |
| BREADTH MLD. | 11,20 | meter |
| DEPTH AT SIDE | 2,50 | meter |
| DRAUGHT MAX | 1,76 | meter |
| DRAUGHT MIN | 0,00 | meter |
| CAPACITY | | |
| GROSS TONNAGE | 000 | ton |
| NET TONNAGE | 000 | ton |
| LIGHT SHIPWEIGHT | 140 | ton |
| CARGO CAPACITY | 437 | ton |
| DECK LOAD | 6 | ton m ² |
| CONSTRUCTION | | |
| DECK PLATE THICKNESS | 10 | mm |
| SHEERSTRAKE THICKNESS | 25 | mm |
| NUMBER OF COMPARTMENTS | 6 void spaces | |

| STANDARD OUTFITTING | |
|---------------------------|---|
| BOLLARDS | 4 x double bollards 2 x single bollards |
| MANHOLES | Flush type manholes |
| TOWING BRACKETS | 2 x towing brackets SWL 65 t at the bow |
| FAIRLEADS | 2 x pieces SWL 65 ton |
| SPUD HOLES | 2 x at SB side |
| OPTIONS | |
| TOWING ARRANGEMENT | Towing bridle with chains and emergency towing arrangement |
| DECK EQUIPMENT | Various of all kind and different deck equipment; cranes, winches, power-packs, accommodation units ect |
| SPUD POLES | Spuds with a diameter of 610 mm |
| SPUD HANDLING ARRANGEMENT | Spuds leg lifting cylinders, including stand diesel driven hydraulic power unit (HPU) |
| RO-RO RAMPS | Winch operated or hydraulic |
| LADDERS | Boarding ladders |



EuroPontoon 3011 | NP 685

For more information, please contact us on:

T +31 (0)184 621 423 E info@neptunemarine.com W www.neptunemarine.com

Version: V.02

