



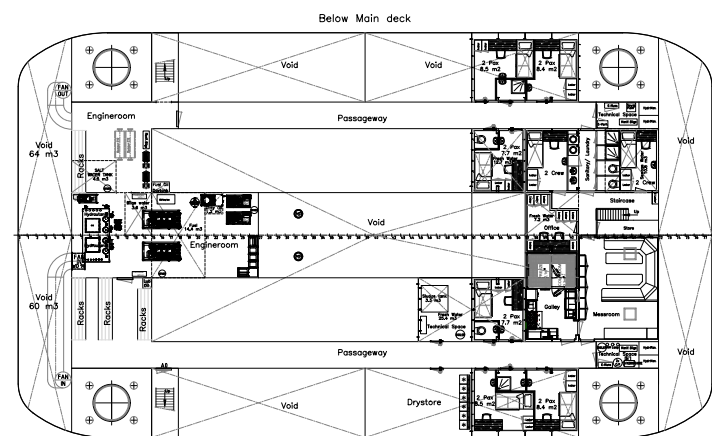
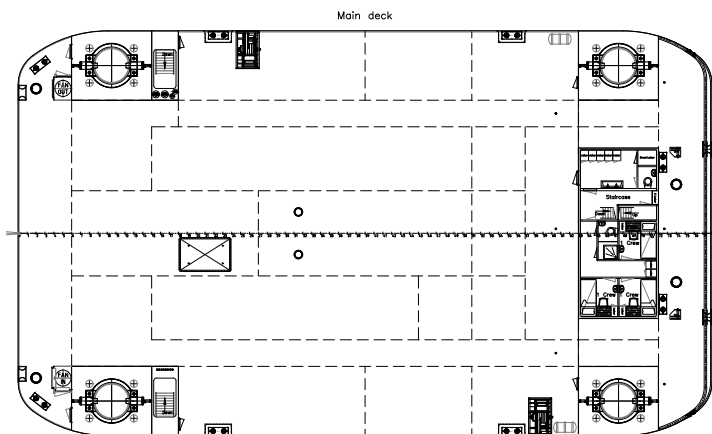
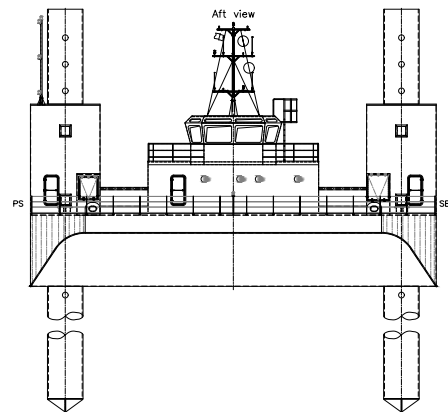
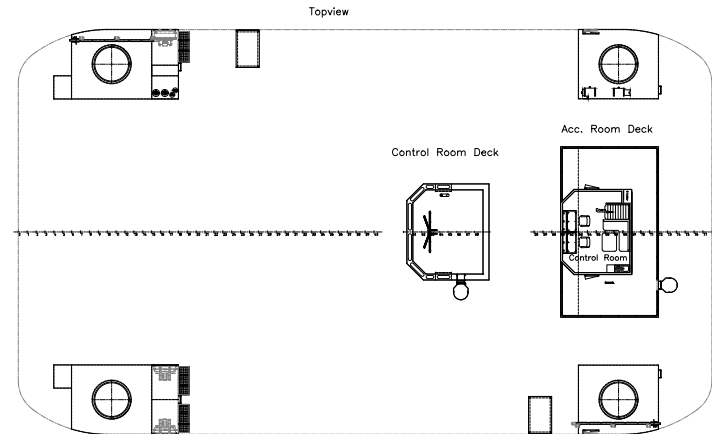
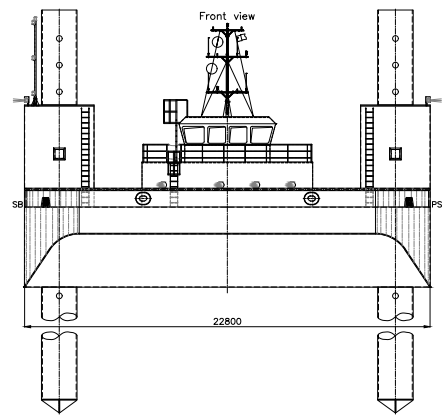
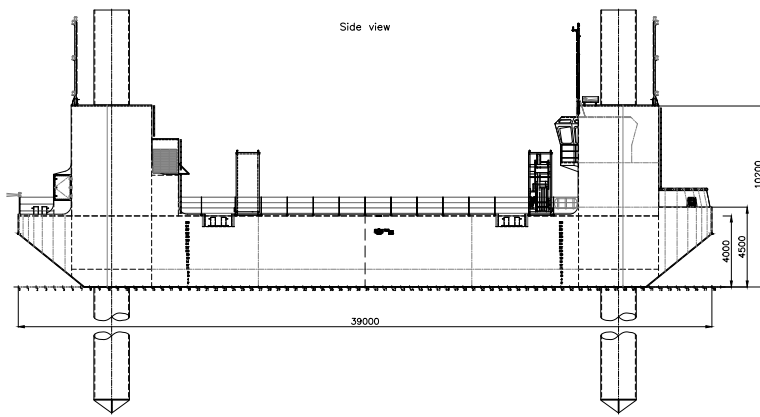
The EuroJack-Up is a multi-purpose jack-up barge design, which offers solutions to all kinds of maritime operations such as offshore construction. It can be modified to fit your demands. This could either be the installation of propulsion, or the installation of a heavy lift crane to fit your project

GENERAL	
IMO NR.	N/A
CALL SIGN	PCZA
YEAR BUILT	2017
HOME PORT	Aalst
CLASSIFICATION	Bureau Veritas I ✘ HULL • MACH Offshore Self Elevating Unit, Coastal Area, Transit over 20 miles from shore with HS < 2.5m

## EuroJack-Up 3923 | NP 497

DIMENSIONS	
LENGTH O.A.	39,00 meters
BREADTH MLD.	22,80 meters
DEPTH AT SIDE	4,00 meters
DRAFT	3,00 meters
OPERATING CONDITIONS	
MAX. DESIGN WATER DEPTH	39,99 meters
SPUD LEGS	
LEG LENGTH (MAIN PART)	41,60 meters
LEG LENGTH (EXTENSIONS)	24,00 meters
DIAMETER	2,00 meters
AUXILIARIES	
HPU JACKING SYSTEM	2x Caterpillar C18
GENERATOR SETS	2x Caterpillar C4.4
TOTAL E-POWER	142,4 kW
FIFI	2 raiser pumps for jacket fire fighting
JACK-UP	Single acting w/o freefall
ACCOMMODATION	
FACILITIES	Airconditioned accommodation for up to 12 persons (afloat) and 19 persons (jacked up)

CAPACITY	
FUEL OIL	14,4 m <sup>3</sup>
FRESH WATER	30,7 m <sup>3</sup>
JACKING PARAMETERS	
JACKING SPEED	15 m/hour
VARIABLE LOAD (PAYLOAD)	Approx. 750 tons
PRELOAD FORCE PER LEG	750 tons
PARAMETERS AT 30 M DEPTH	
CURRENT	1,5 m/sec
WIND VELOCITY (SURVIVAL)	16 m/sec (25 m/sec)
SIGNIF. WAVE HEIGHT (SURVIVAL)	5,0 meters (5,0 meters)
OPTIONS	
POSITIONING SYSTEM	4-point mooring system
ADDITIONAL ACCOMMODATION	Modular units
BOATLANDING	



# EuroJack-Up 3923 | NP 497

For more information, please contact us on:  
 T +31 (0)184 621 423 E info@neptunemarine.com W www.neptunemarine.com  
 Version: V.02

