



EuroCarrier 2409 | Workboat NP 615

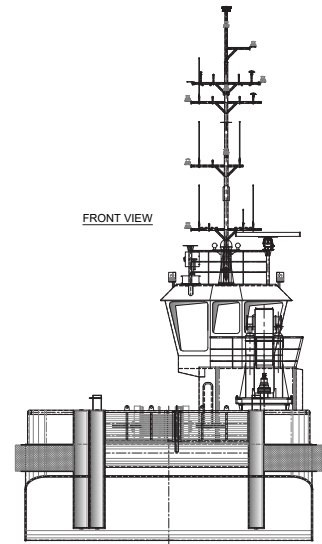
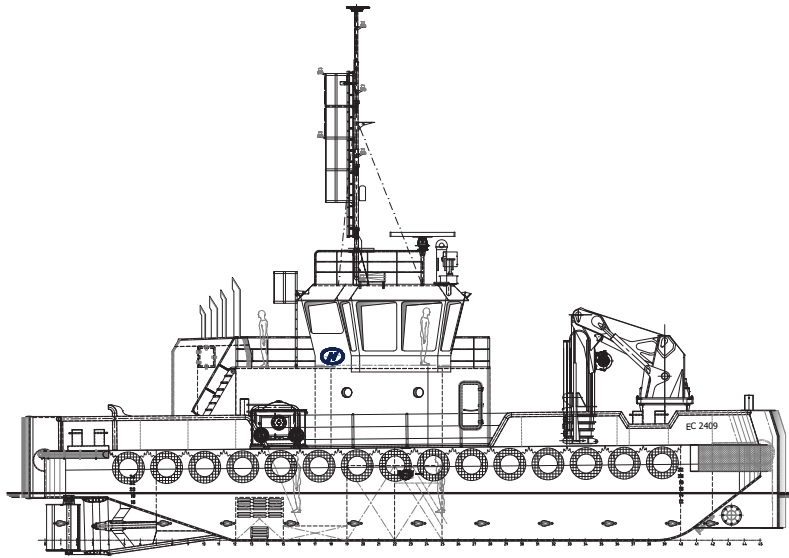


The robust, efficient and flexible design of the EuroCarrier makes it one of the best vessels for anchor handling, dredging support and survey activities. The EuroCarrier can be adapted to perfectly fit any project within a short time.

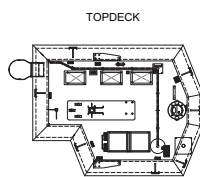
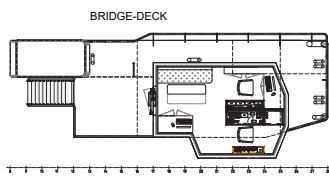


CLASSIFICATION	Bureau Veritas, I ✕ Hull • MACH • AUT-UMS, Unrestricted nav., Tug (standardised bollardpull = 20,1 T), GMDSS Area A1
DIMENSIONS	
LENGTH O.A.	24,00 meters
BREADTH MLD.	9,00 meters
DEPTH AT SIDE	2,80/3,01 meters
DRAFT	2,38 meters
GROSS TONNAGE	160
NET TONNAGE	48
PERFORMANCES	
SPEED	Approx. 9,00 knots
BOLLARD PULL	Approx. 20,00 tons
PROPULSION	
MAIN ENGINES	2x Volvo D16, IMO Tier 3
TOTAL POWER	2x 625 kW at 1900rpm per engine
PROPELLERS	1500mm diameter in nozzle
BOWTHRUSTER	80 kW in SB pushbow
AUXILIARIES	
GENERATOR SETS	2x Volvo D7A T 107 ekW
TOTAL E-POWER	268 KvA
HYDRAULIC POWERPACK	2x 55kW

TANKS	
FUEL OIL	56 m ³
FRESH WATER	30 m ³
DECK LAY-OUT	
ANCHOR HANDLING WINCH/TOWING WINCH	Single Drum, dual wire storage
PULLING FORCE	50T
HAULING SPEED	10m/min-20m/min
DECK CRANE FORWARD	HS AKC 185 HE
DECK	Azobé wooden deck covering
TOWING HOOK	Mampaey 25T SWL
TOWING PINS	Hydraulic guide pins & hydraulic chain stopper
FENDERING	M-fendering at bow corners, D-fendering at stern corners, Truck tyre fendering on sides, Pushbow fendering forward and aft fenders
ACCOMMODATION	
FACILITIES	Airconditioned accommodation for 6 persons
OPTIONS	
WINCH ON FWD CRANE	5T SWL

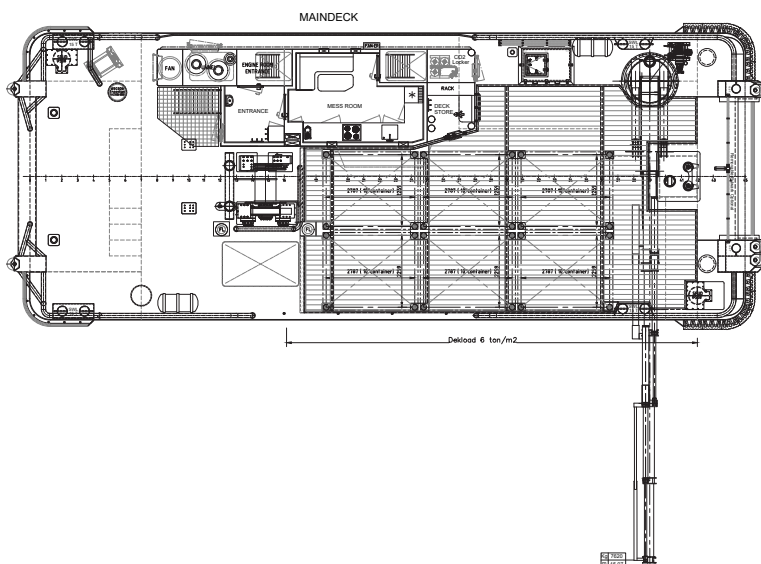


FRONT VIEW

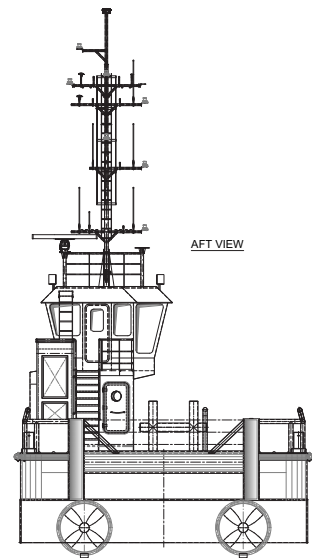


BRIDGE-DECK

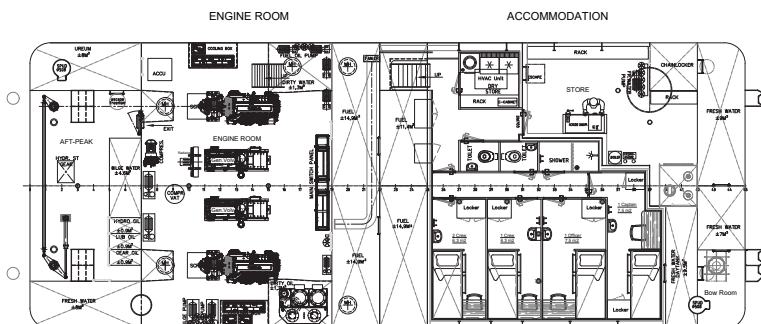
TOPDECK



MAINDECK



AFT VIEW



ENGINE ROOM

ACCOMMODATION

EuroCarrier 2409 | Workboat NP 615

For more information, please contact us on:

T +31 (0)184 621 423 E info@neptunmarine.com W www.neptunmarine.com

Version: V.01

