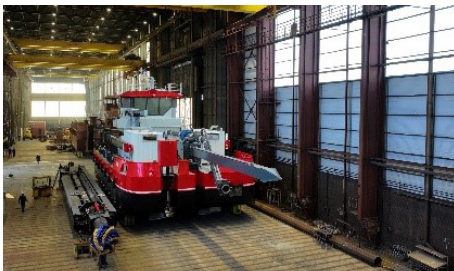




## EuroCutter 500 | Swing Arm

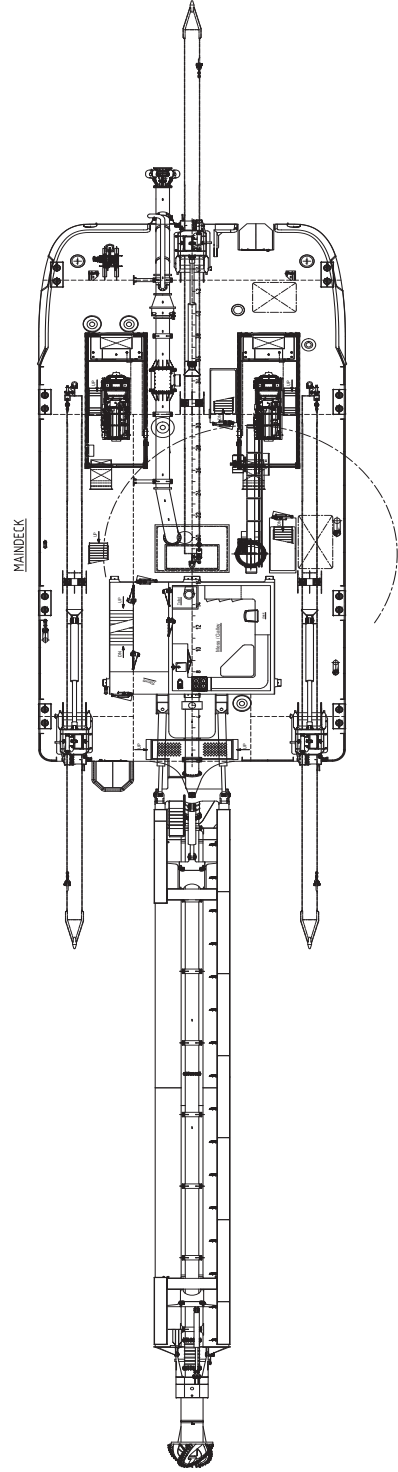
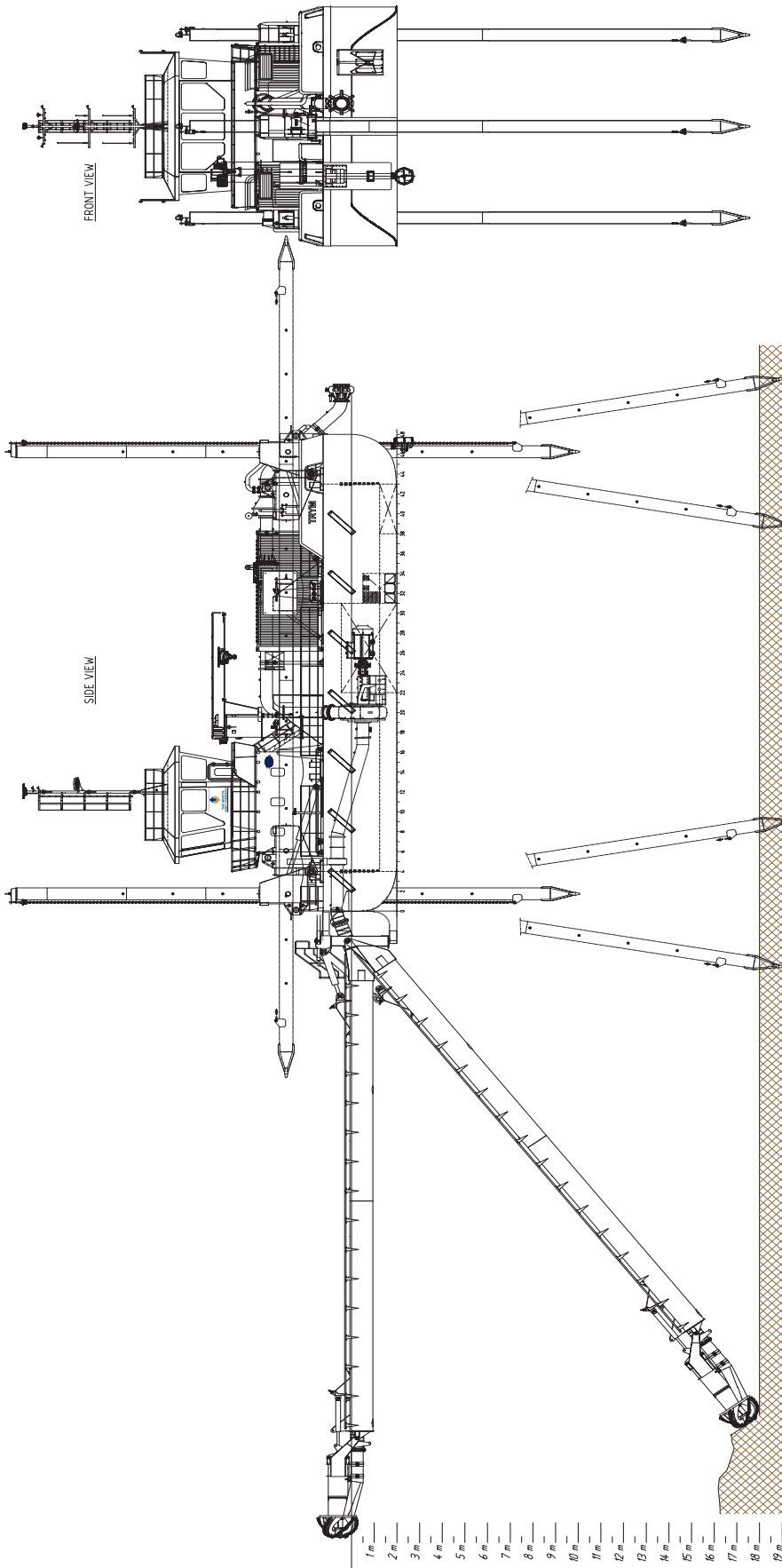


Neptune has developed a range of dedicated cutter dredgers; the EuroCutters. The EuroCutter is designed for optimum production in different environmental conditions. It enables you to perform safe and secure dredging operations. The EuroCutter can also be optionally outfitted with, density measurement, spud carriers, anchor booms, boosterstations. The basic design can be customized for customer specific tasks.



<b>CLASSIFICATION</b>	On request Bureau Veritas, Lloyds Register, ABS, RINA to customers preference
<b>DIMENSIONS</b>	
LENGTH O.A. INCL. LADDER	59,50 meters
LENGTH O.A. MAIN VESSEL	23,90 meters
BREADTH MLD.	12,00 meters
DEPTH	3,25 meters
DRAUGHT DREDGING	2,00 meters
<b>HULL</b>	
LENGTH MAIN PONTOON	23,90 meters
WIDTH MAIN PONTOON	12,00 meters
LENGTH SIDE PONTOON	n/a
WIDHT SIDE PONTOON	n/a
<b>TANK CAPACITIES</b>	
FUEL OIL	50 m <sup>3</sup>
HYDRAULIC OIL	3 m <sup>3</sup>
BALAST WATER	no
<b>POWER SYSTEM</b>	
INSTALLED POWER	1530 kW
MAIN ENGINE	2 X D2862 LE32D

<b>SPUD SYSTEMS</b>	
SPUD LEGS	3
SPUD LENGTH	24,80 meters
SPUD DIAMETER	0,60 meters (square)
SPUD PONTOON CILINDER STROKE	4,90 meters
<b>DREDGING PERFORMANCE</b>	
DREDGING DEPTH APPROX.	18,00 meters
CUTTING POWER	105 kW
CUTTING RPM	0- 40 RPM
DREDGE PUMP	500 mm
<b>SWING ARRANGEMENT</b>	
SWING FORCE	Swingrange is 37,5 m @ 18 m depth
SWING SPEED	150 sec @ 18 m depth
ANCHOR	HHP 480 Kg
<b>OPTIONS</b>	
	<ul style="list-style-type: none"> <li>• Non nuclear denisty measurement</li> <li>• Barge loading / sidecast</li> <li>• Walking spuds</li> <li>• Dustpan</li> <li>• Pipeline swivle connection</li> <li>• Job self propel system</li> <li>• Dredge software</li> </ul>



## EuroCutter 500 | Swing Arm

For more information, please contact us on:

T +31 (0)184 621 423 E [info@neptunmarine.com](mailto:info@neptunmarine.com) W [www.neptunmarine.com](http://www.neptunmarine.com)

Versie: V.01

