


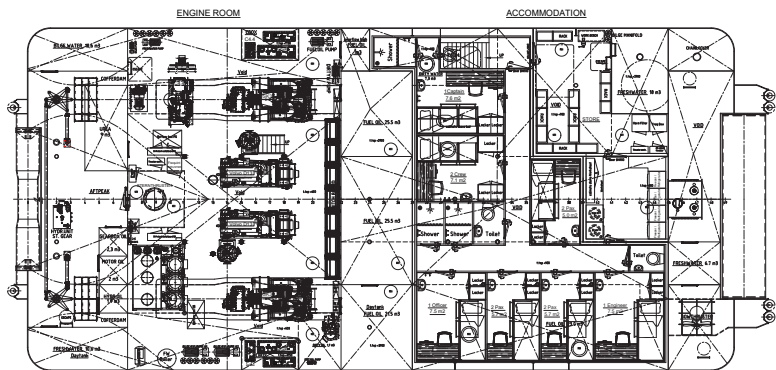
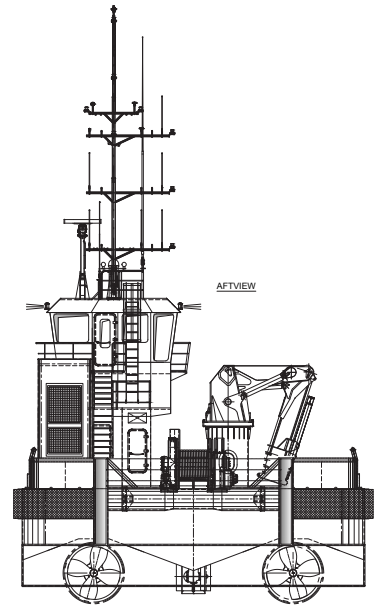
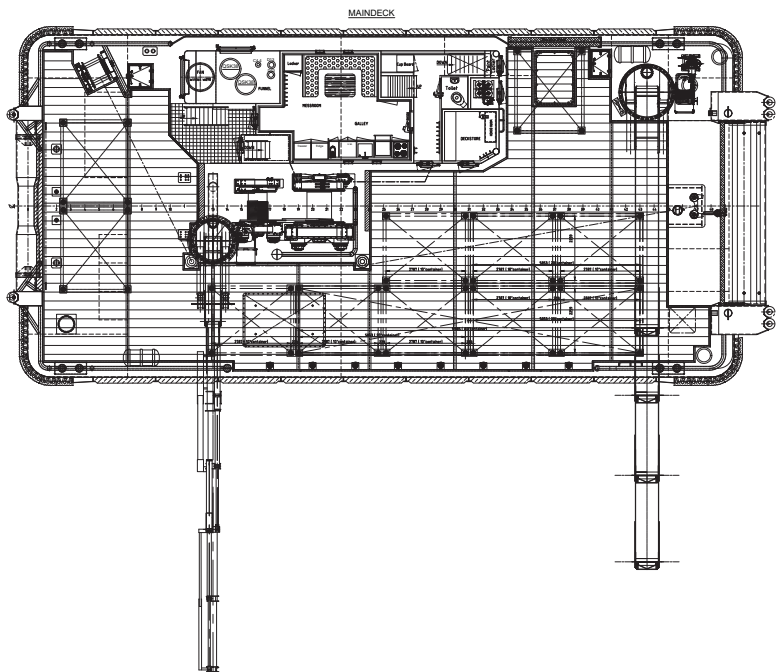
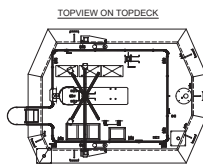
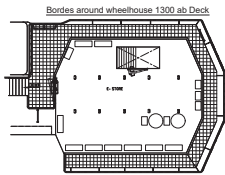
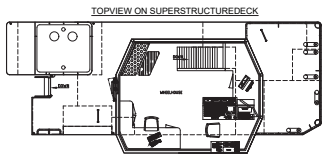
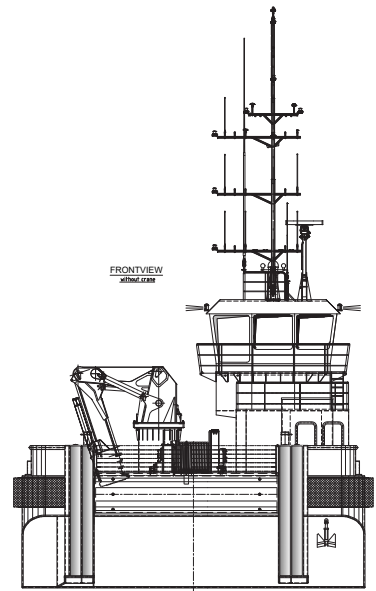
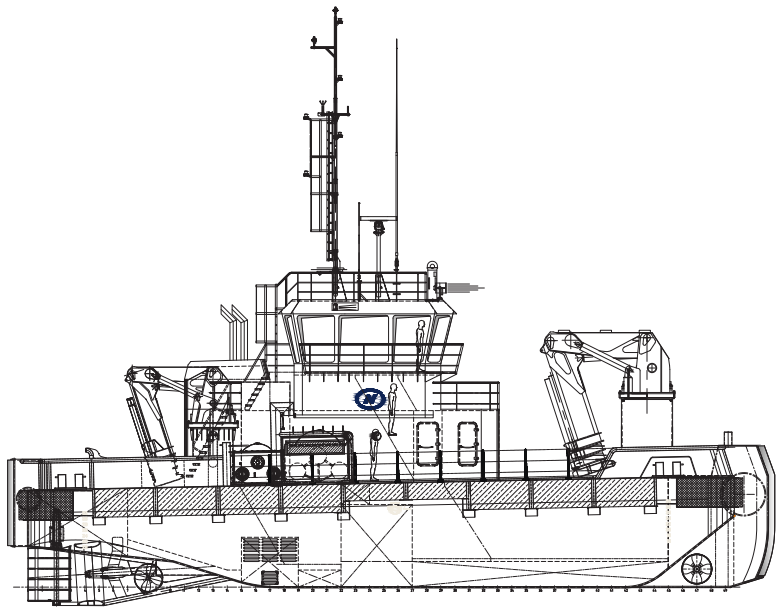
EuroCarrier 2712 | Workboat



The robust, efficient and flexible design of the EuroCarrier makes it one of the best vessels for anchor handling, dredging support and survey activities. The EuroCarrier can be adapted to perfectly fit any project within a short time.



CLASSIFICATION	Bureau Veritas I  HULL • MACH • AUT-UMS, Unrestricted Navigation, Tug GMDSS Area A3		TANKS	FUEL OIL / UREA	95 m ³ / 9 m ³
DIMENSIONS				FRESH WATER	34 m ³
LENGTH O.A.	27,00	meters	DECK LAY-OUT		
BREADTH MLD.	12,00	meters	ANCHOR HANDLING WINCH	150 tons holding force	
DEPTH AT SIDE	3,40/3,90	meters	PULLING FORCE	100 tons at 1 st layer	
DRAFT	3,00	meters	HAULING SPEED	5m/min – 12,5m/min	
GROSS TONNAGE	292	tons	TOWING WINCH	75 tons holding force	
NET TONNAGE	87	tons	PULLING FORCE	50 tons at 1 st layer	
RULE LENGTH	23,81	meters	HAULING SPEED	10m/min – 30m/min	
PERFORMANCES			TUGGER WINCH	15 tons at 1 st layer	
SPEED	9	knots	DECK CRANE FORWARD	Heila HLRM 280-3SL	
BOLLARD PULL	32	tons	DECK CRANE AFT	Heila HLRM 140-3S	
PROPULSION			DECK	Azobé deck covering	
MAIN ENGINES	2x Caterpillar C32 ACERT, TIER 3		TOWING PINS	Aft ship: manual guide pins flush in deck, fore ship: hydraulic guide pins & hydraulic chainstopper	
TOTAL POWER	1940 kW at 1800 RPM		FENDERING	Azobe side, M-fendering on the sides, fendering pushbow fendering fore-and aft ship	
PROPELLERS	1850 mm diameter in nozzle		ACCOMMODATION		
AUXILIARIES			FACILITIES	Airconditioned accommodation for 5 crew, 6 pax	
GENERATOR SETS	2x Volvo D13 TIER 3, 1x Caterpillar C4.4		INCLUDED OPTIONS		
TOTAL E-POWER	800 kW		4-POINT MOORING SYSTEM	4 hydraulic winches and anchors	
STERNTHRUSTER	250 kW tunnel thruster aft engineroom on centreline		TOWING HOOK	Mampaey 45 tons SWL	
BOW THRUSTER	300 kW tunnel thruster in SB pushbow		CAPSTANS	5 ton, hydraulic driven	
HYDRAULIC POWER PACK	3x 90 kW		DYNAMIC POSITIONING	Class 1	



EuroCarrier 2712 | Workboat

For more information, please contact us on:

T +31 (0)184 621 423 E info@neptunmarine.com W www.neptunmarine.com

Version: V.02

