



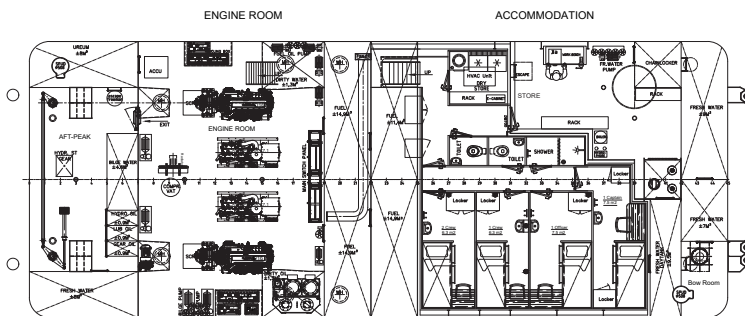
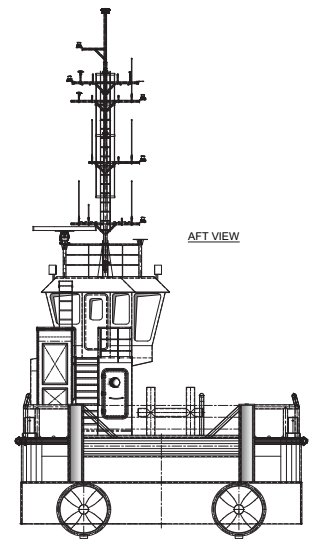
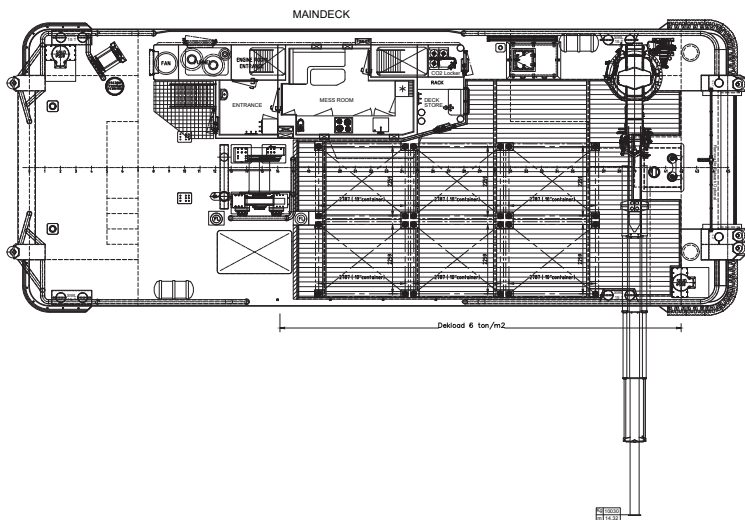
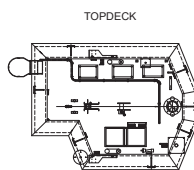
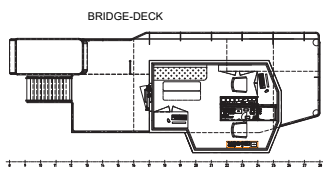
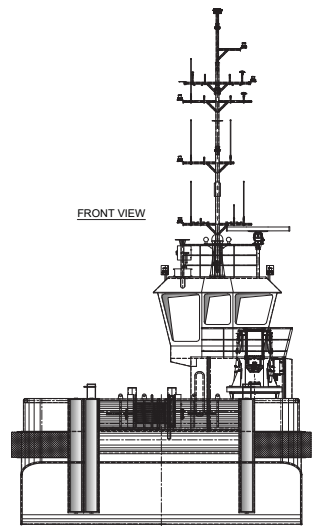
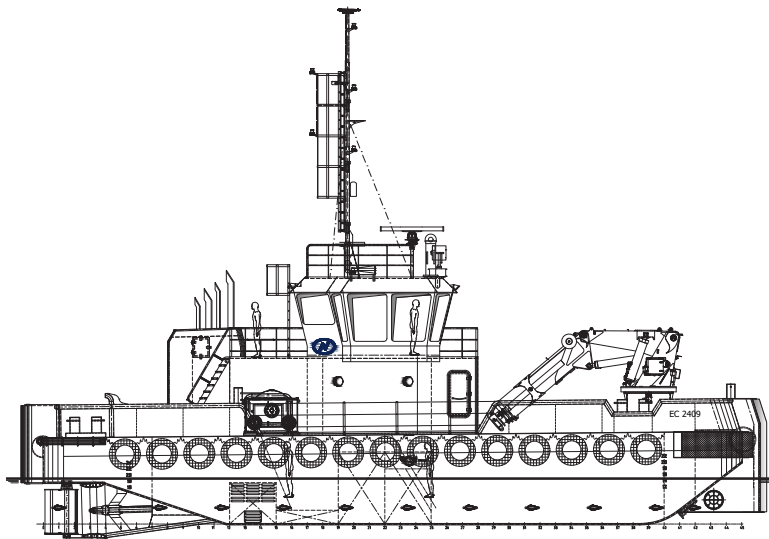
EuroCarrier 2409 | Workboat



The robust, efficient and flexible design of the EuroCarrier makes it one of the best vessels for anchor handling, dredging support and survey activities. The EuroCarrier can be adapted to perfectly fit any project within a short time.



CLASSIFICATION	Bureau Veritas I  HULL • MACH • AUT-UMS, Unrestricted Navigation, Tug GMDSS Area 1		TANKS	
DIMENSIONS			FUEL OIL	56 m ³
LENGTH O.A.	24,00	meters	FRESH WATER	31 m ³
BREADTH MLD.	9,00	meters	DECK LAY-OUT	
DEPTH AT SIDE	2,80/3,01	meters	ANCHOR HANDLING / TOWING WINCH	Split drum type
DRAFT	2,047	meters	PULLING FORCE	50 tons at 1 st layer
GROSS TONNAGE	140	tons	HAULING SPEED	10m/min- 30m/min
NET TONNAGE	48	tons	DECK CRANE FORWARD	Heila HLRM 170-4S
PERFORMANCES			DECK	Azobé deck covering
SPEED	10	knots	TOWING PINS	Aft ship: manual set, fore ship: hydraulic set + chain stopper
BOLLARD PULL	21	tons	FENDERING	Tire fendering at sides, pushbow fendering fore- and aft ship M-fendering at corners
PROPULSION			ACCOMMODATION	
MAIN ENGINES	2x Volvo D16 MH IMO TIER III 625kW at 1900 RPM		FACILITIES	Airconditioned accommodation for 5 crew
TOTAL POWER	1250 kW at 1900 RPM		OPTIONS	
PROPELLERS	1500 mm diameter in nozzle		WINCH ON FWD CRANE	8 tons
AUXILIARIES			SB, FWD & PS, AFT. SPUDS WIRE WINCH OPERATED	20 tons each
GENERATOR SETS	1x Volvo D7A (box cooled) 1x Volvo D7A (box & radiator cooled)		A-FRAME	25 ton
TOTAL E-POWER	268 kW		TOWING HOOK	Mampaey 30 tons SWL
HYDRAULIC POWER PACK	2x 55 kW		SPUDS	
BOW TUNNEL THRUSTER	80 kW electric			



EuroCarrier 2409 | Workboat

For more information, please contact us on:

T +31 (0)184 621 423 E info@neptunmarine.com W www.neptunmarine.com

Version: V.01

