


The robust, efficient and flexible design of the EuroCarrier makes it one of the best vessels for anchor handling, dredging support and survey activities. The EuroCarrier can be adapted to perfectly fit any project within a short time.

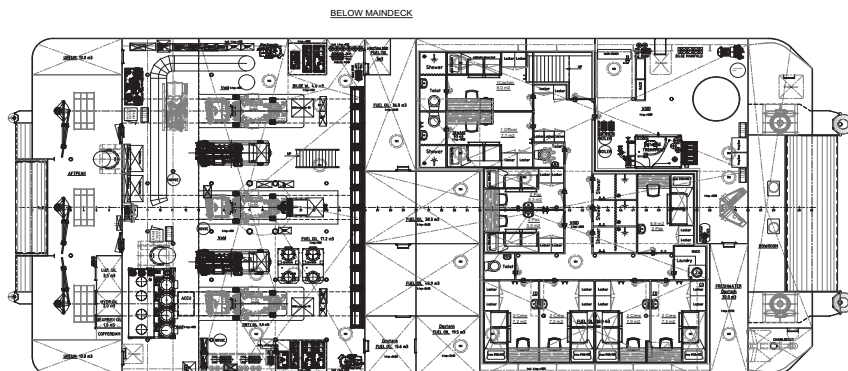
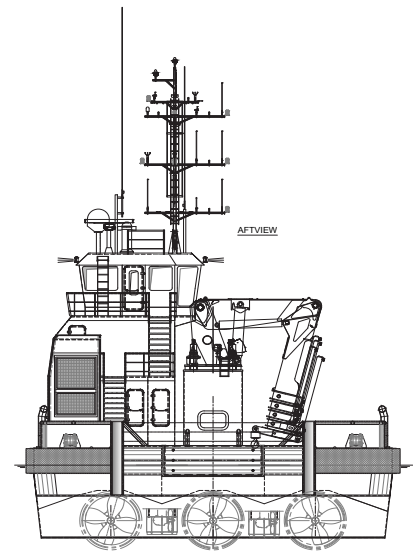
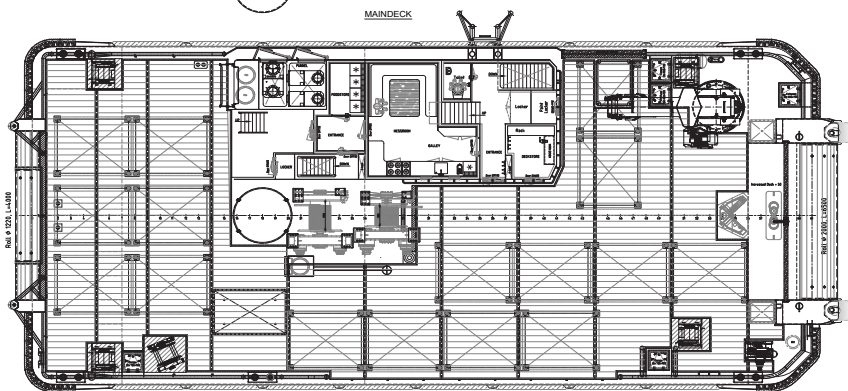
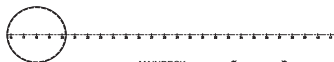
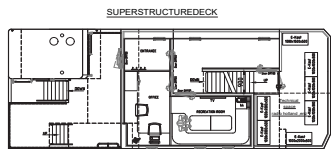
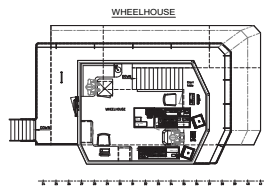
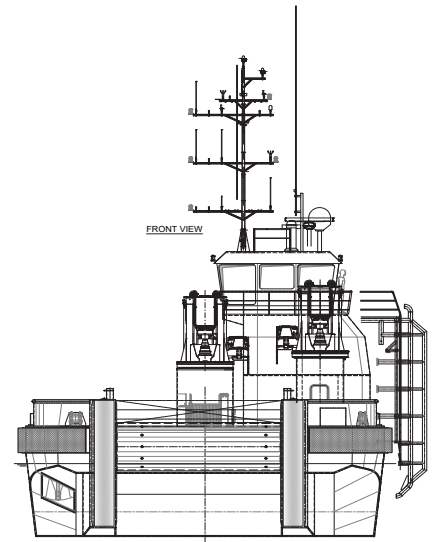
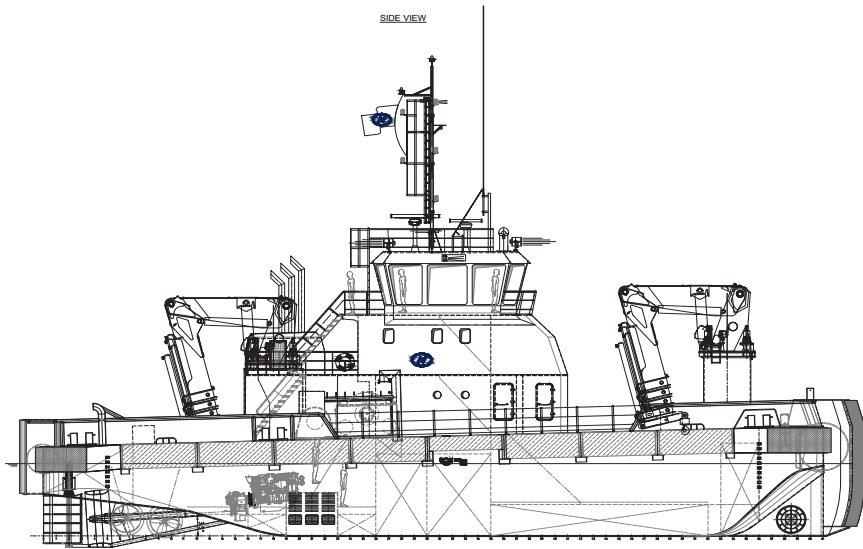


EuroCarrier 3314 | INNE K | DPII

GENERAL	
IMO NR.	9992517
CALL SIGN	
CONSTRUCTED	2024
HOME PORT	Aalst
CLASSIFICATION	Bureau Veritas I  HULL • MACH • AUT-UMS, DYNAPOS AM/AT R, Unrestricted Navigation, Tug, Special Service Multi Purpose vessel, Clean Ship-Ulev GMDSS Area A3

DIMENSIONS		
LENGTH O.A.	33,00	meter
BREADTH MLD.	14,00	meter
DEPTH AT SIDE	3,70/4,55	meter
DRAFT MIN/MAX	03,00	meter
GROSS TONNAGE	486	
NET TONNAGE	145	
PERFORMANCES		
SPEED	10	knots
BOLLARD PULL	50	ton
DYNAMIC POSITIONING	Class 2	
PROPULSION		
MAIN ENGINES	3x Caterpillar C32	
TOTAL POWER	2684 kW at 1800 RPM	
PROPELLERS	3x 2000 mm in nozzle	
AUXILIARIES		
GENERATOR SETS	1x Caterpillar C32 2x Caterpillar C18 1x Caterpillar C7.1	
TOTAL E-POWER	1596	kW
HYDRAULIC POWER PACK	416	kW
STERNTRUSTER	2x 300	kW
BOW THRUSTER	2x 300	kW
ACCOMMODATION		
FACILITIES	Airconditioned accommodation for up to 16 persons.	
	Separate office space	
	Separate recreation room	

TANKS	
FUEL OIL	200 m ³
FRESH WATER	30 m ³
DECK LAY-OUT	
ANCHOR HANDLING WINCH	200 ton holding force
PULLING FORCE	150 ton at 1 st layer
HAULING SPEED/CAPACITY	10m/min – 30m/min
TOWING WINCH	140 tons holding force
PULLING FORCE	50 tons at 1 st layer
HAULING SPEED/CAPACITY	10m/min – 20m/min 700m/42mm
TUGGER WINCH	15 tons at 1 st layer
DECK CRANE FORWARD	HS Marine AKC 550, incl.15 Twinch
DECK CRANE AFT	HS Marine AKC 370
DECK	Azobé deck covering
TOWING HOOK	60 ton
TOWING PINS	Aft ship: manual set, fore ship: hydraulic set + chain stopper
FENDERING	Wood- and M-fendering on the side, pushbow fendering fore- and aft ship
OPTIONS	
4-POINT MOORING SYSTEM	4 hydraulic winches and anchors
BOATLANDING	



EuroCarrier 3314 | INNE K | DPII

For more information, please contact us on:

T +31 (0)184 621 423 E info@neptunemarine.com W www.neptunemarine.com

Version: V.02

