

Product Highlights

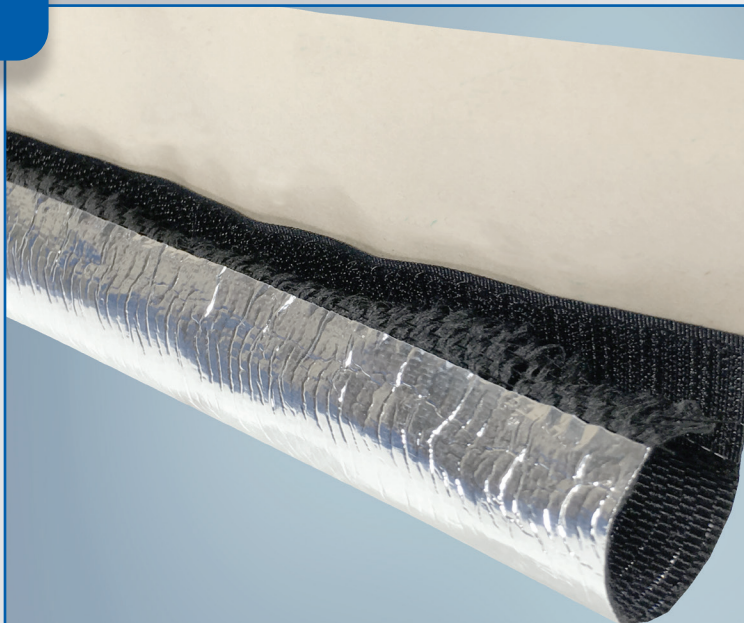
- Operating temperature up to +150°C (+302°F)
- Excellent radiant and convective heat protection
- Abrasion resistant construction
- Easy to apply, wrap around construction
- Integrated hook & loop closure for easy install
- Adhesive closure tape for maximum protection
- Lightweight, flexible & low profile
- Fluid and chemical resistant

Typical Applications

- Engine Compartment Applications
- Wire Harnesses
- Brake & Fuel Lines
- Tube, Hose & Cable Assemblies



Our manufacturing sites are certified ISO 9001, IATF 16949, or AS/EN 9100, ISO 14001 and ISO 45001 (Selected Sites)



ReflectWrap® 1490 is a wrappable, aluminized sleeve that provides excellent protection against radiant heat sources for critical engine and exhaust system components. ReflectWrap 1490 incorporates an integral hook and loop closure as well as an adhesive strip closure. This unique design offers ease of installation in closed-end applications as well as resistance to extreme heat and fluids.

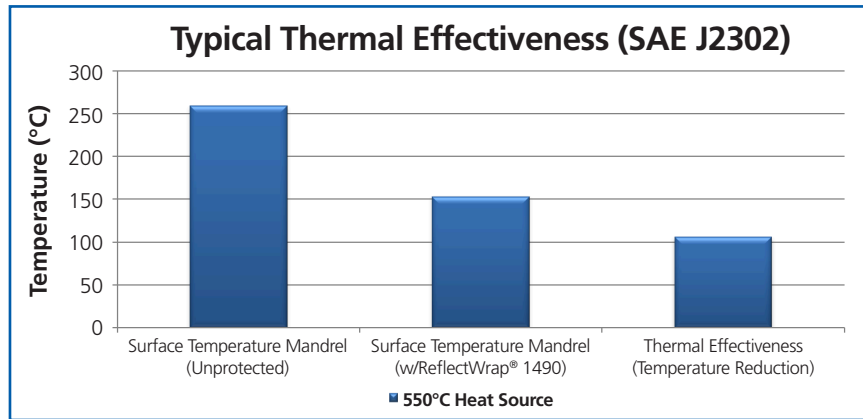
Featuring a woven construction combining lightweight polyester monofilaments and texturized multifilaments, ReflectWrap 1490 has an outer aluminum foil laminate. Initial closure of the sleeve is obtained through the use of an integral hook & loop design. Permanent closure is achieved with a self-adhesive strip. The adhesive seal acts as a resistant barrier to dirt and fluids while maintaining the full integrity of the finished aluminized protective sleeve. These features optimize the overall efficiency of the sleeve and assure longer service life for the protected component.

Performance Data – ReflectWrap® 1490

Property	Test Method	Result
Temperature Rating	240 hours at +175°C (+150°C rating)	Pass +150°C (+302°F)
Thermal Endurance	No degradation or delamination (25mm above a +538°C heat source for 6 hours)	Pass
Low Temperature Flexibility	SAEJ2192	Pass -40°C (-40°F)
Flammability	SAE J369	Self-extinguishing
Fluid Resistance	SAEJ2192	Pass

All numeric performance data shows average or typical values. Please consult your sales representative for product drawings, test reports and OEM approvals.

Thermal Effectiveness of Sleeving Insulation



Note: Mandrel is parallel to and 25mm (1") away from heat source

Construction / Characteristics

Outer Layer	Reflective Laminate
Inner Layer	Warp Yarn: Polyester (PET) monofilament Fill Yarn: Polyester (PET) multifilament

Availability

Standard sizes are listed here, Additional sizes could be available upon request.

Available in spools and custom cut lengths. Recommended cut lengths are in 5mm increments. Please see regional drawings for cut length tolerances.

Please consult your local sales representative for regional packaging details and standards.

Standard Sizes

Commercial Part Number	Nominal Diameter (mm)
ReflectWrap 1490 13	13
ReflectWrap 1490 19	19
ReflectWrap 1490 25	25
ReflectWrap 1490 32	32
ReflectWrap 1490 35	35
ReflectWrap 1490 38	38
ReflectWrap 1490 45	45
ReflectWrap 1490 51	51

* Based on the product's closure and/or self-locating design, there could be variables that impact size selection. Please consult your local sales representative for recommendations and guidance to ensure proper functionality and optimized performance for your application.



United States: (1) 800 926 2472 • México: (52) 442 101 8100 • Brazil: (55) 19 3116 1600
 EMEA: (33) 3 44 39 06 06 • Japan: (81) 45 330 0300 • China: (86) 21 6182 7560
 Southeast Asia: (66) 35 276 400 • Korea: (82) 44 861 6368 • India: (91) 124 4784565
www.tennecosp.com



For informational purposes only. Tenneco makes no warranties as to the accuracy or completeness of the information provided herein and disclaims any liability in connection with its use. Tenneco's only obligations are those provided in its terms and conditions of sale for this product, and Tenneco will not be liable for any damages, whether direct or indirect, arising out of the use or misuse of this product. Users should undertake their own evaluations to determine the suitability of the product for specific applications. ©2020 Tenneco Systems Protection, manufacturer of Bentley-Harris protection products.

RW1490-NA(EN-LTR)A