

AMP SUPERSEAL 1.5 Series Connectors

for the Automotive Industry

POWERTRAIN SYSTEMS



SAFETY & SECURITY SYSTEMS



CONVENIENCE



DRIVER INFORMATION



BODY & CHASSIS SYSTEMS



AMP SUPERSEAL 1.5 SERIES CONNECTORS

INTRODUCTION

TE Connectivity has developed the AMP SUPERSEAL 1.5 series connector family to meet the increasing requirements for reliability and water proofness.

AMP SUPERSEAL 1.5 series connector exceed the requirements prescribed by IP 67 according IEC 60529 and DIN 40050-9 standards and has its application in the automotive, agriculture and industrial machinery.

For sensor application the AMP SUPERSEAL 1.5 series Connector system is qualified as well.

Advantages

- Compact system minimizes packaging requirements
- Sealing reliability proven under harsh conditions
- Designed for ease of manual harness assembly, engine mounting and under hood environments

Applications

- Wire-to-Wire (1.5 mm) and ECU applications, under hood or any location where sealing is required
- Suitable for automotive, truck, bus, or off-road vehicles



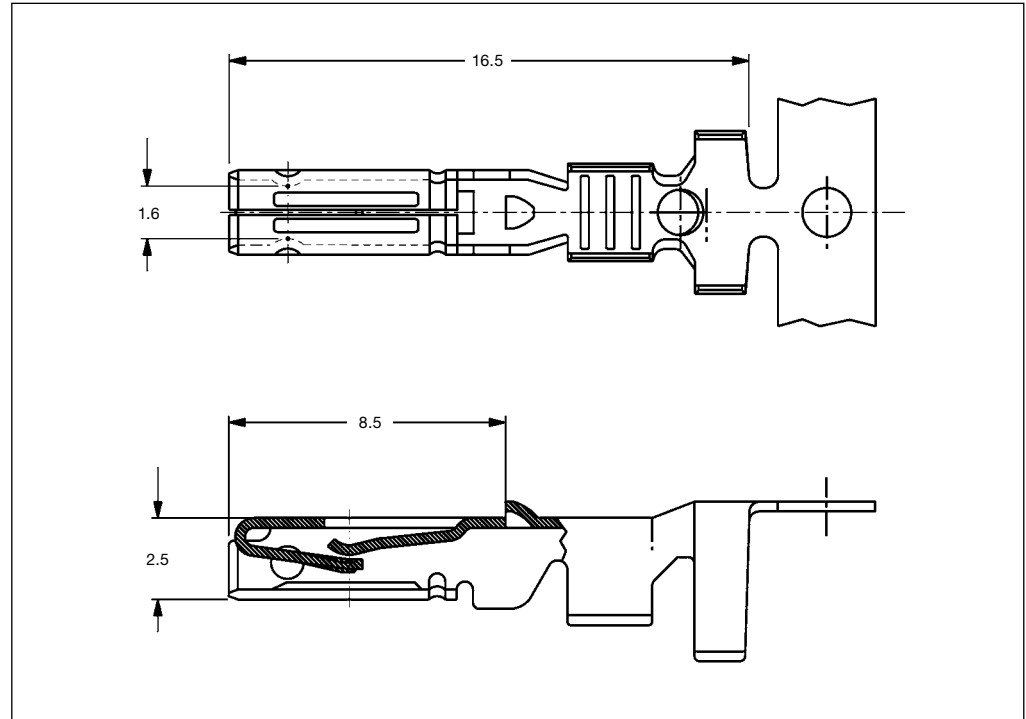
Application Tooling Note

For further information please visit <http://www.te.com/products/application-tooling.html> for our Search Function.



AMP SUPERSEAL 1.5 Series Connectors 1.5 mm Receptacle Contacts

1.5 mm Receptacle Contacts



Technical Features

Contact Finish:

Tin plated

Current Carrying Capacity:

14 A max.

Wire Size Range:

0.35 – 2.5 mm²

Insulation Diameter:

1.2 – 3.3 mm FLR

Extraction Tool:

Part No. 9-1579007-1

Product Specification:

108-20090

Application Specification:

114-20045

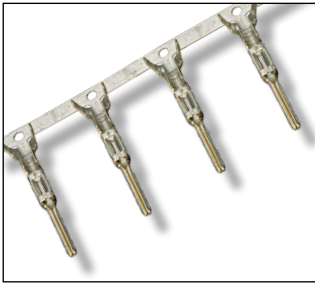
1.5 mm Receptacle Contacts

Wire Size Range (mm ²)	Insulation Diameter (mm)		Material and Finish	Part Numbers		
	FLK	FLR		Strip Form	Applicator	Hand Tool
0.35 – 0.50	1.45 – 2.20	1.2 – 1.6	CuSn, tin plated	282403-1	2151734-2 / 2266249-2 *)	Hand Tool Frame 539635-1 Die-Set 539773-2
0.75 – 1.50	2.40 – 3.35	1.7 – 2.4		282110-1	2151205-2 / 2266053-2 *)	58583-1
1.50 – 2.50	3.15 – 3.80	2.2 – 3.3		282466-1	2151856-2	–

*) Use in Stripper Seal Crimp Terminator

AMP SUPERSEAL 1.5 Series Connectors 1.5 mm Tab Contacts

1.5 mm Tab Contacts



Technical Features

Contact Finish:

Tin plated, gold plated

Current Carrying Capacity:

14 A max.

Wire Size Range:

0.35 – 2.5 mm²

Extraction Tool:

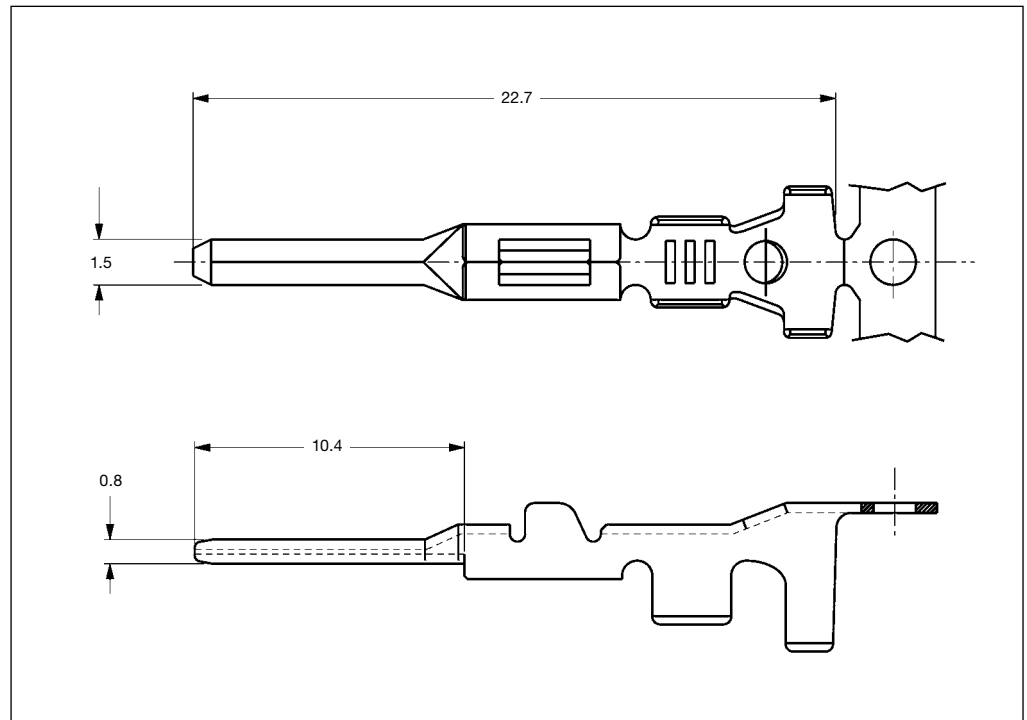
Part No. 9-1579007-1

Product Specification:

108-20090

Application Specification:

114-20045



1.5 mm Tab Contacts

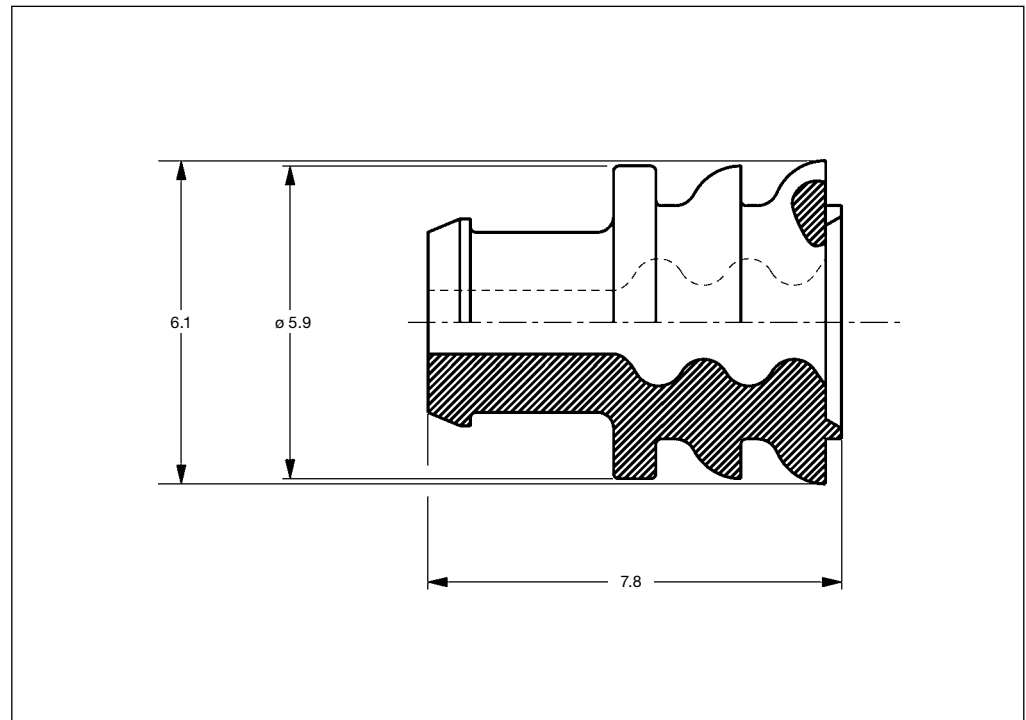
Wire Size Range (mm ²)	Insulation Diameter (mm)		Material and Finish	Part Numbers		
	FLK	FLR		Strip Form	Applicator	Hand Tool
0.35 – 0.50	1.45 – 2.20	1.2 – 1.6	CuZn, tin plated	282404-1	2151855-2	Hand Tool Frame 539635-1 Die Set 539773-2
			CuZn, gold plated	282404-3		
0.75 – 1.50	2.40 – 3.35	1.7 – 2.4	CuZn, tin plated	282109-1	2151204-2 / 2266068-2 *)	58583-1
			CuZn, gold plated	282109-3		
1.50 – 2.50	3.15 – 3.80	2.2 – 3.3	CuZn, tin plated	282465-1	2266253-2	–

*) Use in Stripper Seal Crimp Terminator

Single Wire Seals and Cavity Plug

Technical Features

- Made from silicon rubber material
- For insulation diameters of 1.2 – 3.3 mm
- Loose-piece wire seals are crimped simultaneously with the contacts



Single Wire Seals and Cavity Plug

Insulation Diameter (mm)	Color	Part Number
1.2 – 1.6	Green	281934-4
1.7 – 2.4	Yellow	281934-2
2.5 – 3.3	Red	281934-3
Cavity Plug	Red	282081-1

AMP SUPERSEAL 1.5 Series Connectors Plug Housings

Plug Housings (utilizes Receptacle Contacts)



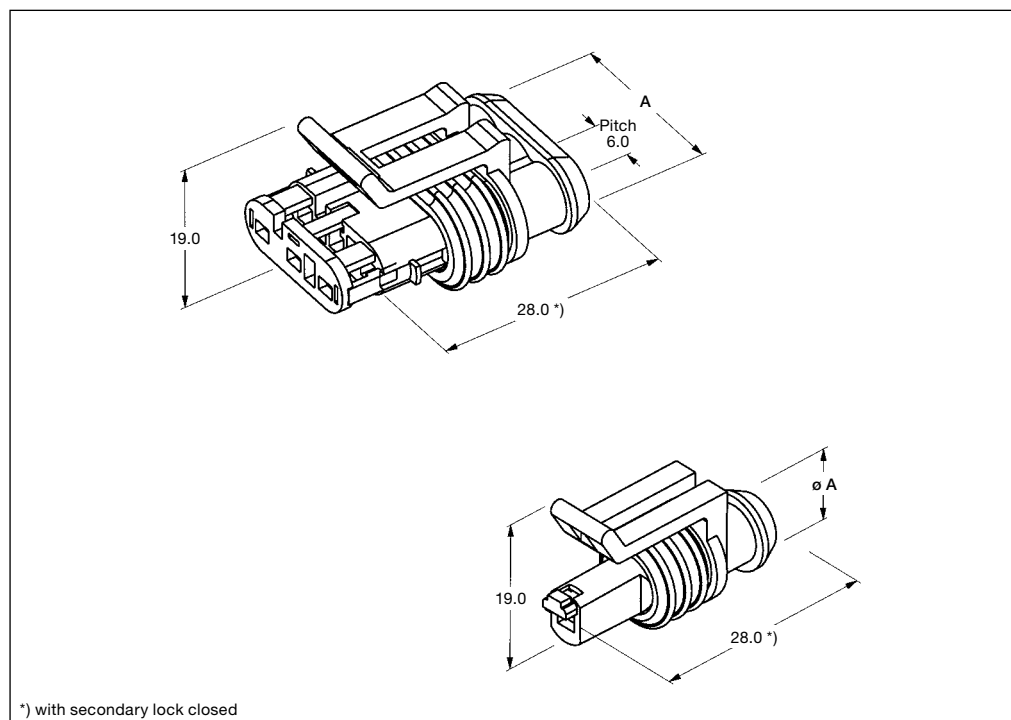
1 to 6 positions



Technical Information

Product Specification:
 108-20090

Application Specification:
 412-20000



Plug Housings

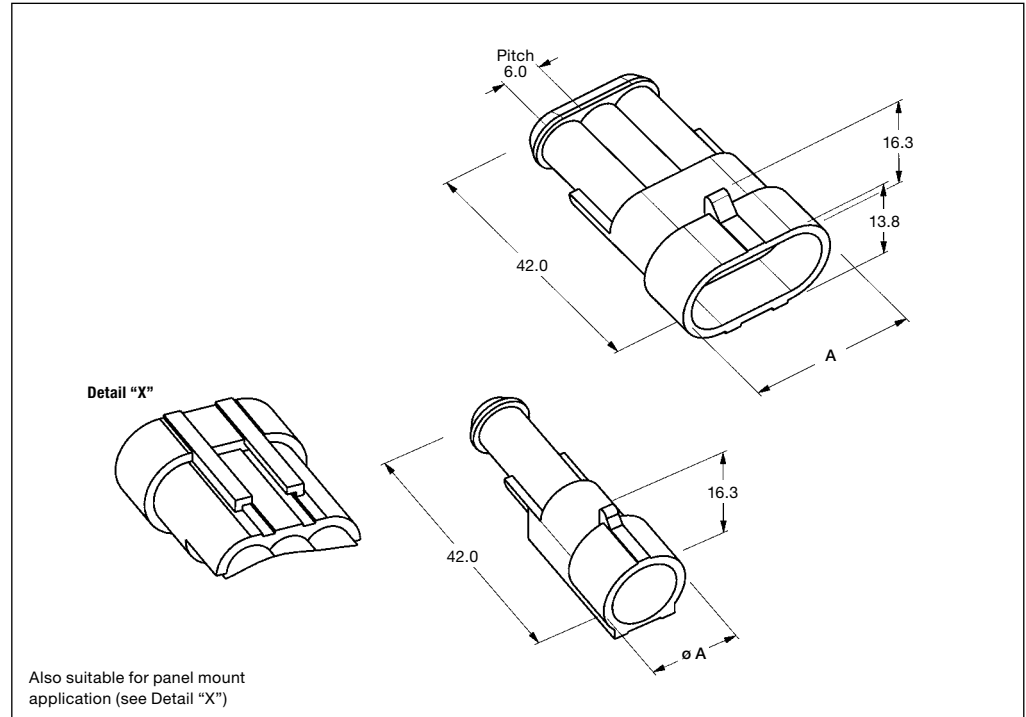
No. of Positions	Dimension A (mm)	Part Number
1	9.3	282079-2
2	15.3	282080-1
3	21.3	282087-1
4	27.3	282088-1
5	33.3	282089-1
6	39.3	282090-1

AMP SUPERSEAL 1.5 Series Connectors Cap Housings

Cap Housings (utilizes Tab Contacts)



1 to 6 positions



Technical Information

**Extraction Tool
 for Secondary Lock
 of Cap Housing:**
 Part No. 785084-1

**Insertion Tool
 for Secondary Lock
 of Cap Housing:**
 Part No. 785061-1
 for 1 and 2 positions
 Part No. 785061-2
 for 3 – 6 positions

Product Specification:
 108-20090

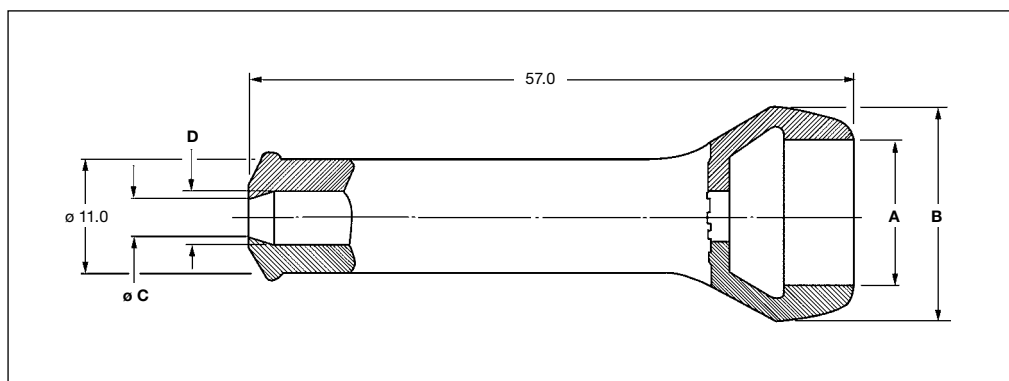
Cap Housings

No. of Positions	Dimension A (mm)	Part Number
1	13.8	282103-1
2	19.8	282104-1
3	25.8	282105-1
4	31.8	282106-1
5	37.8	282107-1
6	43.8	282108-1

AMP SUPERSEAL 1.5 Series Connectors Rubber Boots

Rubber Boots

No. of Positions	Connector Housing Part Number	Description	Rubber Boot Part Number	Color
2	282080-1	Plug Housing	880810-1	Black
	282104-1	Cap Housing		
3	282087-1	Plug Housing	880811-2	Black
	282105-1	Cap Housing		
5	282089-1	Plug Housing	880814-1	Black
	282107-1	Cap Housing		



Dimensional Data

No. of Wires	Boot Part Number	Dimensions (mm)			
		A	B	C	D
2	880810-1	12.5	20.5	4.6	5.0
3	880811-2	17.5	25.5	4.6	5.0
4	493581-1*	21.0	34.5	–	7.0
5	880814-1	27.5	35.0	6.5	7.0

*) Different style, see customer drawing