

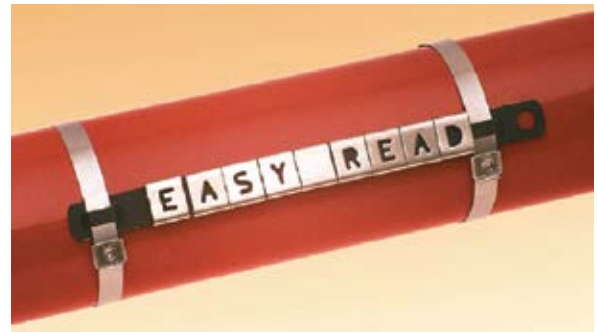
Easy Read Identification

EASY-Read Characters

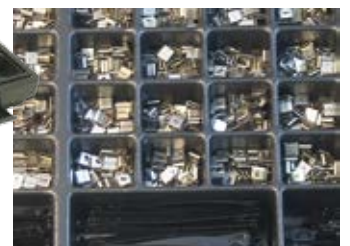
PART NUMBER	DESCRIPTION	PACKAGE WEIGHT	
		LBS	KGS
AE010	EASY A	0.31	0.14
AE011	EASY B		
AE012	EASY C		
AE013	EASY D		
AE014	EASY E		
AE015	EASY F		
AE016	EASY G		
AE017	EASY H		
AE018	EASY I, 1		
AE019	EASY J		
AE020	EASY K		
AE021	EASY L, 7		
AE022	EASY M, W		
AE023	EASY N		
AE024	EASY O		
AE025	EASY P		
AE026	EASY Q		
AE027	EASY R		
AE028	EASY S		
AE029	EASY T		
AE030	EASY U		
AE031	EASY V		
AE032	EASY X		
AE033	EASY Y		
AE034	EASY Z.		
AE037	EASY 2		
AE038	EASY 3		
AE039	EASY 4		
AE040	EASY 5		
AE041	EASY 6, 9		
AE042	EASY 8		
AE035	EASY Minus/Hyphen		
AE036	EASY Blank		
AE046	EASY Plus +		
AE047	EASY Earth ±		
AE048	EASY Sine ~		
AE049	EASY Slash /		

A complete range of individual letters, numbers and symbols that clearly identifies in any environment.

- BAND-IT EASY READ letters, numbers and symbols made from type 316SS
- EASY READ characters slide onto carriers/strips or any 3/8" wide tie/band
- Easy to read in dim light and inaccessible places
- Slide directly onto cable ties to create a self-contained wrap tag
- Characters sold individually in bags of 100 pieces



AE060 Easy-Read Kit



Easy Read Kit

PART NUMBER	DESCRIPTION	WEIGHT	
		LBS	KGS
AE060	Kit contains 50 of each character/carrier/strip	5.60	2.54